

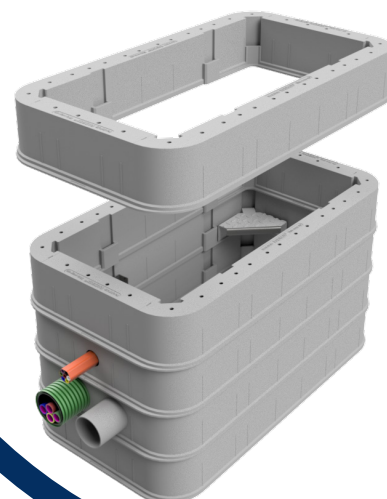
## Access Chambers Systems



**RADIUS**  
CTS

**NEW** RadBox2®

Up to  
**40t**  
Top Load



### Description

RadBox2® is a next generation high performance, pre-formed underground access chamber developed for Altnets and the wider Telecoms market.

RadBox2® offers an optimised cost effective solution, combining high structural strength and rapid installation with no compromise on quality - all with minimum fuss.

- EN124 Class D400\*
- Moulded from High Density Polyethylene (HDPE) using structural foam moulding techniques
- Stress free mouldings with excellent long-term performance and chemical resistance
- Immediate load-bearing strength
- No need for concrete backfill
- Drop in Furniture

**\*NOTE**

For carriageway installation it is advised that the installer ensures a reinforced concrete C40 base, a full backfill surround of C40 concrete and an adequate cover slab that will, during operation, dissipate the top-load around the backfill and not directly onto the chamber. Final criteria to be verified by your structural engineers.

### FEATURES

- One stop installation
- Simple - Fast - Reliable
- Lightweight, easy to handle
- Maximum flexibility of duct entry location in side or end walls
- Excellent vertical & sidewall stiffness
- No internal bracing required
- Excellent chemical & weathering resistance
- Ideal for green and brown field installations

### Network Applications

During new construction, Radbox2® can be installed concurrent with duct systems.

- Simple - no lifting equipment
- Fast - enables access between peak traffic periods
- Reliable - pre-formed quality and strength

#### Overbuild

Customer connections and network reconfiguration often require operators to place additional access points on a live network.

RadBox2® simple and lightweight stacking system makes it ideal for building over installed ducts and reduces the risk to the live network.

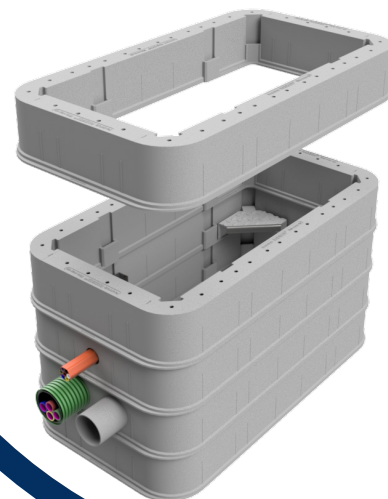
## Access Chambers Systems



**RADIUS**  
CTS

**NEW** RadBox2®

Up to  
**40t**  
Top Load



### Sizes & Dimensions

#### Dimensions - Clear openings

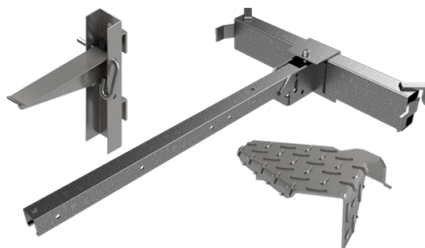
Code	Length (mm)	Width (mm)	Weight of full ring (kg)	Top Load (t)	Pallet Qty.
UY1805	915	445	9.2	40	32
UY1806	1310	610	12.2	40	17

#### Depth Options

All sizes are moulded in 150mm deep panels. Units stack together to produce the required depth.

#### Furniture

RadBox2® has purpose-designed features to accommodate steps, cable bearer systems and mobras. These drop into place, without tools and can be relocated at any time.



#### Covers and Frames

We offer a complimentary range of frames and covers to suit the installation location in various loading classes from B125 to D400.

Choice of concrete infill, recessed steel, ductile iron and composite.

Our concrete infill covers are BSI Kitemarked and Openreach approved.

