

Outside Plant



**RADIUS**  
CTS

Chamber Furniture

Description

Radius offer a range of furniture and accessories to complement their RadBox®, RadBox2® and QuadBox® access chambers. These include furniture for cable management, safe access as well as accessories for duct entries and drainage.

Wall Brackets and Cable Bearers

- Manufactured from galvanized steel to BS EN 1461 : 1999
- Wall-mounted for RadBox®
- Drop-in for QuadBox® and RadBox2®
- Wall brackets can be placed vertically to suit cable and can accommodate multiple cable bearers
- Cables can be securely strapped onto cable bearers



Cable Bearer, Locking Pin & Wall Bracket

Wall Brackets (Kit incl. fixings)			
Ref	No Holes	Length	Product Code
Type 1	1	178mm	UY0417
Type 2	2	278mm	UY0425
Type 3	3	508mm	UY0418
Type 5	5	813mm	UY0419
Type 8	8	1270mm	UY0426
Type 10	10	1575mm	UY0515
Type 12	12	1880mm	UY0516

Cable Bearers (Kit incl. locking pin)		
Ref	Length	Product Code
Type 3	115mm	UY0414
Type 5	165mm	UY0415
Type 8	242mm	UY0416
Type 12	343mm	UY0511
Type 18	495mm	UY0512
Type 24	648mm	UY0513
<b>Locking Pin</b>		UY0386



Drop in Furniture Kits (for QuadBox® and RadBox2® only)					
Ref	Wall Bracket	Cable Bearer	Locking Pin	Step	Product Code
Type 4	2No (Type 2)	2No (Type 8)	2No	-	UY0011
Type 6	2No (Type 2)	2No (Type 8)	2No	1No	UY0009

Anchor Irons

- For pulling and guiding cables, can be cast into the concrete base of the chamber
- Manufactured from galvanized steel to BS EN 1461 : 1999

Ref	Type	Product Code
No4	Heavy Duty	UY0509

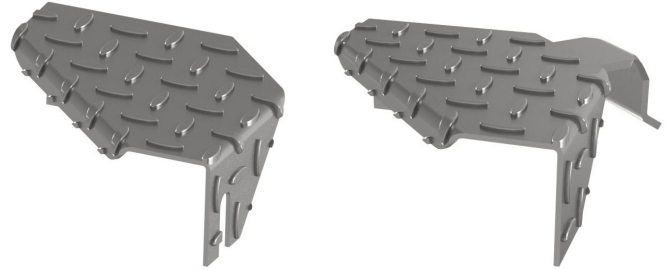


Outside Plant



**RADIUS**  
CTS

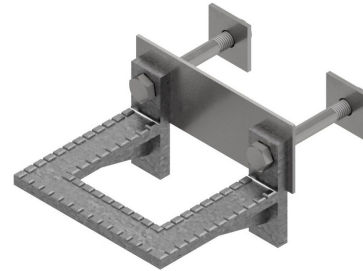
Chamber Furniture



Steps

- Provide safe stepped access into the chamber
- Manufactured from galvanized steel to BS EN 1461 : 1999

Type	Chamber	Fit	c/w fixings	Product Code
Drop In Step	QuadBox® RadBox2®	Corner fit	-	UY0010
Wall Mounted Step	RadBox®	Corner fit	Yes	UY0388
Wall Mounted Step Iron	Universal	Chamber wall	Yes + backing plate	UY0169



Grating Sump

- A drainage sump for use in access chambers and joint boxes

Type	Dimensions	Material	Product Code
Grating Sump 2A+ Sump	225x225mm	PVC	UY0508



Duct Entry Bellmouth

- Provides a smooth finish to duct ends
- Prevents duct from pushing into the chamber
- Seals against sand/backfill ingress

Size	Material
54mm	Polypropylene
89.9mm	Polypropylene
96mm	Polypropylene
110mm	Polypropylene
178mm	Polypropylene



Pre-Fitting Service

Radius offer a fit-out service whereby we can factory fit accessories and pre-drill duct entries to suit customer requirements.