

Access Chambers Systems

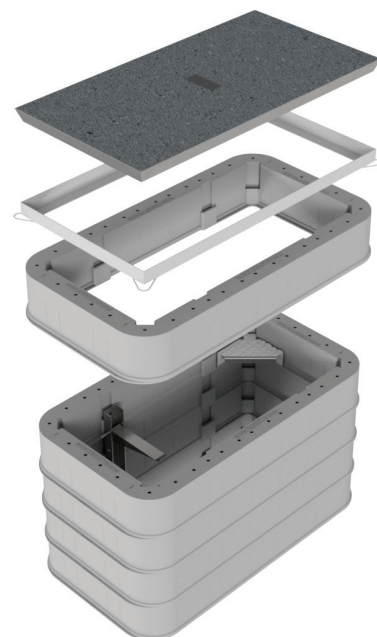
RADBOX²® FW4 & FW6

Virgin Media

VM SKU 10015682 FW4
VM SKU 10015683 FW6



Up to
40t
Top Load



Description

Radbox²® is a next generation high performance, pre-formed underground access chamber for all types of buried networks and utilities.

This chamber is primarily designed for B125 applications but is also suitable for D400 applications subject to specific installation guidelines.

TECHNICAL FEATURES

- EN124 Class D400*
- Moulded from High Density Polyethylene (HDPE) using structural foam moulding techniques
- Stress free mouldings with excellent long-term performance and chemical resistance
- Immediate load-bearing strength
- No need for concrete backfill

*For carriageway installation please refer to our specific guidelines in the Radbox Installation document.

Network Applications

During new construction, Radbox²® can be installed concurrent with duct systems.

- Simple - no lifting equipment
- Fast - enables access between peak traffic periods
- Reliable - pre-formed quality and strength

Overbuild

Customer connections and network reconfiguration often require operators to place additional access points on a live network.

Radbox² simple and lightweight stacking system makes it ideal for building over installed ducts and reduces the risk to the live network.

Packing

Compact packaging minimises transport costs, stockholding and storage space.

FEATURES

- One stop installation
- Simple - Fast - Reliable
- Lightweight
- Maximum flexibility of duct entry location in side or end walls
- Excellent vertical & sidewall stiffness
- No internal bracing required
- Excellent chemical & weathering resistance

Access Chambers Systems

RADBOX²® FW4 & FW6 Virgin Media



VM SKU 10015682 FW4
VM SKU 10015683 FW6

Sizes & Dimensions

Dimensions - Clear openings

Reference	Clear Opening (mm)	Length (mm)	Width (mm)	Weight of full ring (kg)	Top Load (t)	Pallet Qty.	MOQ
FW4	915 x 445	915	445	9.21	40	18	36
FW6	1310 x 610	1310	610	12.24	40	7	14

Covers and Frames

Covers and frames can be provided to suit the installation location.

- B125 Ductile Iron available with ductile iron or galvanised steel frames
- B125 Concrete infill, Kitemarked and Openreach approved
- C250 Ductile
- D400 Ductile. Suitable for aggressive locations

Depth Options

All sizes are moduled in 150mm deep panels. Units stack together to produce the required depth.

Furniture

Radbox² has purpose-designed features to accommodate access steps and cable bearer systems. These drop into place, without tools and can be relocated at any time.

