

Main Duct Systems

PVC DUCT - POWER

Radius uPVC Power duct is a compact solid wall pipe manufactured under the ISO 9001:2015 quality system and in accordance with ENA TS 12-24 (Class 1 and Class 2).

Each length is push-fit socketed as standard and complies with IP54. Ring seal sockets are available for a range of sizes and comply with IP57. A full range of fittings is also available incl. bends, couplers and transition couplers.

Technical Information

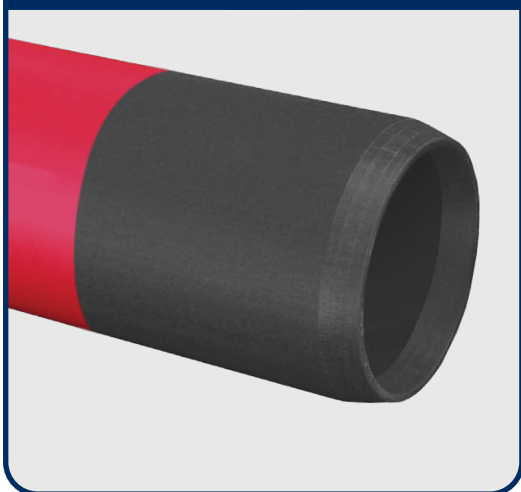
| | |
|---------------|---|
| Material | Unplasticised Polyvinyl Chloride (uPVC) |
| Colour | Black or Red Colour fastness and UV stability for 6 months external storage, for UK and Ireland only. |
| Print | Every meter with meter count and batch number for traceability. Can be customer specific if required. |
| Standards | ENA TS 12-24 Class 1, Class 2 and Class 3 Radius operates under ISO 9001:2015, ISO 14001:2004 systems and ISO 18001:2007 |
| Duct lengths* | 6m as standard also available in 3m. Other lengths on request and subject to MOQ. |
| Packaging | Supplied on non-returnable wooden U-Frames to be stored on even ground, pallets must not be stored more than 3 high. |

Standard Dimensions

| Nominal O.D. (mm) | Nominal I.D. (mm) | Wall Thickness (mm) | Length* (m) | Socket Interference Length (mm) | Ring Seal Socket Length (mm) | Pack Qty (Lengths) |
|-----------------------------|----------------------|---------------------|----------------|------------------------------------|---------------------------------|-----------------------|
| Class 1 ENA TS 12-24 | | | | | | |
| 88.9 | 81.9 | 3.5 | 6 | 80 | X | 138 |
| 110 | 102 | 4.0 | 6 | 110 | 110 | 114 |
| 125 | 116 | 4.35 | 6 | 125 | X | 68 |
| 160 | 150 | 5.13 | 6 | 160 | 160 | 39 |
| 200 | 188 | 6.05 | 6 | 200 | 200 | 23 |
| 250 | 237 | 6.5 | 6 | 250 | 250 | 14 |
| Class 2 ENA TS 12-24 | | | | | | |
| 96.5 | 89 | 3.7 | 6 | 96 | X | 105 |
| 110 | 103 | 3.37 | 6 | 110 | 110 | 114 |
| 125 | 118 | 3.7 | 6 | 125 | X | 68 |
| 160 | 151 | 4.35 | 6 | 160 | 160 | 39 |
| 200 | 190 | 5.05 | 6 | 200 | 200 | 23 |
| 250 | 239 | 5.5 | 6 | 250 | 250 | 14 |

SEMI-CONDUCTIVE

SEMI-CONDUCTIVE Ducting



Rapid Detection System

Radius Semi-Conductive Power duct offers a rapid solution to locating potential faults in the sheath of ducted power cables. Much faster than traditional methods, this system offers fault location accurate to within 3m.

Semi-Conductive duct spigots are coated with a specially formulated "electro conductive" material which acts as an earthing point from the cable sheath fault - detected by standard equipment - to the ground.

Benefits

- Rapid Detection
- Speedier Repair / shorter down times
- More cost effective (less digging/ fewer man hours)
- Standard duct installation method
- Available in Standard Push Fit and Interference Ring Seal Socket (IP57)

Dimensions

Nominal O.D.
(mm)

110

125

160

200

250

* Standard lengths are 6m, 3m available on request, subject to MOQ.