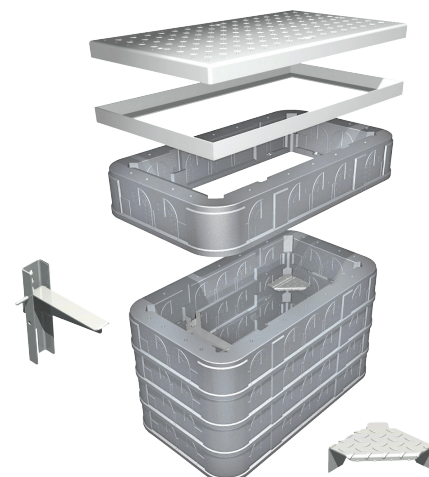


Access Chambers Systems



QUADBOX®



Description

Quadbox® is a robust preformed underground access chamber system for use in all types of buried networks and utilities.

Quadbox® system is made from stacking sections allowing variable chamber depths. It is especially suitable for use in congested networks.

Quadbox® Footway 2, 4 and 6 are JMF openreach approved.

TECHNICAL FEATURES

- Moulded from High Density Polyethylene (HDPE) using structural foam moulding techniques
- Stress free mouldings with excellent long-term performance and chemical resistance
- Immediate load-bearing strength
- No need for concrete backfill or raising frame
- Excellent chemical & weathering resistance
- EN124 Class D400*

*Q915 Chambers and above.

NOTE

For carriageway installation it is advised that the installer ensures a reinforced concrete C40 base, a full backfill surround of C40 concrete and an adequate cover slab that will, during operation, dissipate the top-load around the backfill and not directly onto the chamber. Final criteria to be verified by your structural engineers.

Network Applications

Quadbox® has immediate loadbearing strength and offers single step installation, with no need for concrete backfill or raising frame. Installation can be completed in less than 3 hours.

Splice points

- Pulling or blowing points
- Subscriber connection break & branch

Pre-formed polymer chambers offer benefits for all applications because they allow rapid construction.

- Simple - no lifting equipment
- Fast - enables access between peak traffic periods
- Reliable - pre-formed quality and strength

New Build

During new construction, Quadbox® can be installed concurrent with duct systems.

Overbuild

Customer connections and network reconfiguration often require operators to place additional access points on a live network.

Quadbox® simple and lightweight stacking system makes it ideal for building over installed ducts and reduces the risk to the live network.

FEATURES

- One stop installation
- Simple - Fast - Reliable
- 5 sizes - Many depths, Stacking units
- Footway 2, 4 and 6 are openreach approved
- Twin wall for excellent strength and stiffness
- Generous overlap between sections for maximum integrity
- Suitable for use and crossing in congested networks
- Duct entry drill guides
- Easy fit furniture



Access Chambers Systems



QUADBOX®

Sizes & Dimensions

Dimensions - Clear openings

Type	Openreach Ref.	Code	Length (mm)	Width (mm)	Segment Weight (kg)	Top Load (t)	Pallet Qty.	openreach
FW1	N/A	UY0000	300	300	2.4	12.5	52	-
FW1/EN1	N/A	UY0001	600	450	5.9	12.5	20	-
FW2/EN2	JMF102	UY0002	725	255	6.5	25	45	Approved
FW4/EN4	JMF104	UY0003	915	445	14	40	30	Approved
FW6/EN6	JMF106	UY0004	1310	610	19	40	17	Approved

Covers and Frames

Covers and frames can be provided to suit the installation location.

- B125 Ductile Iron Standard sizes available with ductile iron or galvanised steel frames.
- B125 Concrete Infill. Available for any size.
- C250 Ductile
- D400 Ductile. Suitable for aggressive locations.

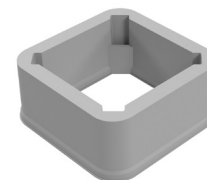
Depth Options

All segments come in 150mm height. Segments are stacked to produce the required chamber depth.

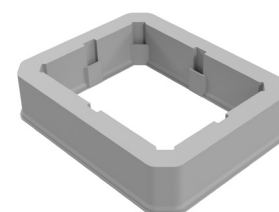
A generous overlap of 15mm between segments assures the integrity of the box by preventing the “staircase effect”.

Furniture

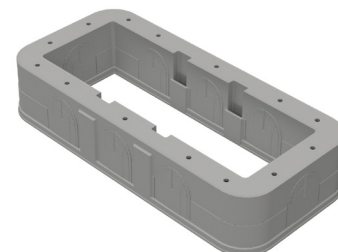
Quadbox® has purpose-designed features to accommodate access steps and cable bearer systems. These clip into place, without tools and can be relocated at any time.



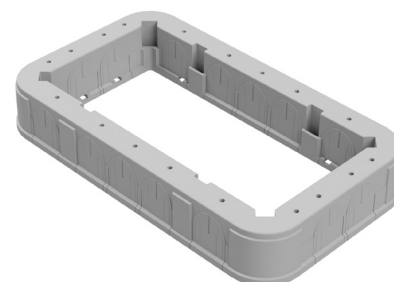
Q300



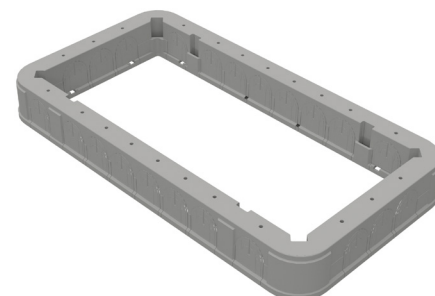
Q600



Q725



Q915



Q1310

