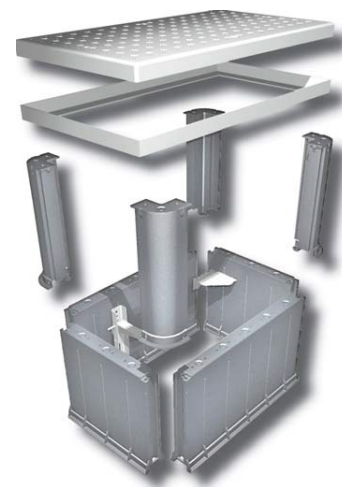


# RADBOX®



## Access Chambers Systems



### Description

Radbox® is a high performance, pre-formed underground access chamber for all types of buried networks and utilities.

The chamber is delivered as a compact lightweight flat-pack consisting of easily assembled components.

Radbox® is a modular system comprising of wall panels and corner pieces which fit together to provide a wide range of chamber sizes.

#### TECHNICAL FEATURES

- EN124 Class D400\*
- Moulded from High Density Polyethylene (HDPE) using structural foam moulding techniques
- Stress free mouldings with excellent long-term performance and chemical resistance
- Immediate load-bearing strength
- No need for concrete backfill

\*600 x 600 Chambers and above.

#### NOTE

For carriageway installation it is advised that the installer ensures a reinforced concrete C40 base, a full backfill surround of C40 concrete and an adequate cover slab that will, during operation, dissipate the top-load around the backfill and not directly onto the chamber. Final criteria to be verified by your structural engineers.

#### FEATURES

- One stop installation
- Simple - Fast - Reliable
- Lightweight, flat-packed for cost effective transportation & storage
- Maximum flexibility of duct entry location in side or end walls
- Excellent vertical & sidewall stiffness
- No internal bracing required
- Excellent chemical & weathering resistance

### Network Applications

During new construction, Radbox® can be installed concurrent with duct systems.

- Simple - no lifting equipment
- Fast - enables access between peak traffic periods
- Reliable - pre-formed quality and strength

### Components

Pack includes wall panels, corner pieces, mounting bracket and closer plates.

### Packing

Compact packaging minimises transport costs, stockholding and storage space.

## Access Chambers Systems

### Sizes & Dimensions

#### Standard Sizes

Single wall panels are available in standard sizes which can be used in any combination to build modular chambers of required height, width and length.

#### Extended Sizes

Longer chambers are possible using jointing pins to link multiple panels per side. These are reinforced with steel to assure wall stiffness.

#### Dimensions - Clear openings

Single Panels	Extended Range	
	2 Panels (mm)	3 Panels (mm)
Width (mm)		
450	825	1200
600	975	1350
750	1125	1500
900	1275	1650
1050	1425	1800
	1575	1950
	1725	
	1875	
	2025	

#### Covers and Frames

Covers and frames can be provided to suit the installation location.

- A15, B125, D400 Ductile Iron - Standard sizes available with ductile iron or
- galvanised steel frames
- A15, B125, D400 Concrete Infill - Available for any size
- A15, B125, D400 Ductile
- A15, B125, D400 composite

#### Multi-Chambers

Multi-chambers can be created by using special cross joints to interlink panels.



#### Depth Options

All sizes are moulded in 500mm or 150mm deep panels. Units clip and stack together to produce the required depth.



#### Width & Length

Any combination of standard wall panels.

#### Depth

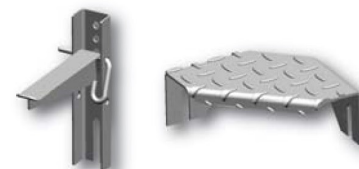
Any combination of 500mm and 150mm high panels.



#### Furniture

Purpose designed accessories fix securely with special fastenings.

Floors are also available.



#### Packing

Radbox® is available in flat packs providing easy handling, cost-effective transportation and minimum storage space.

