



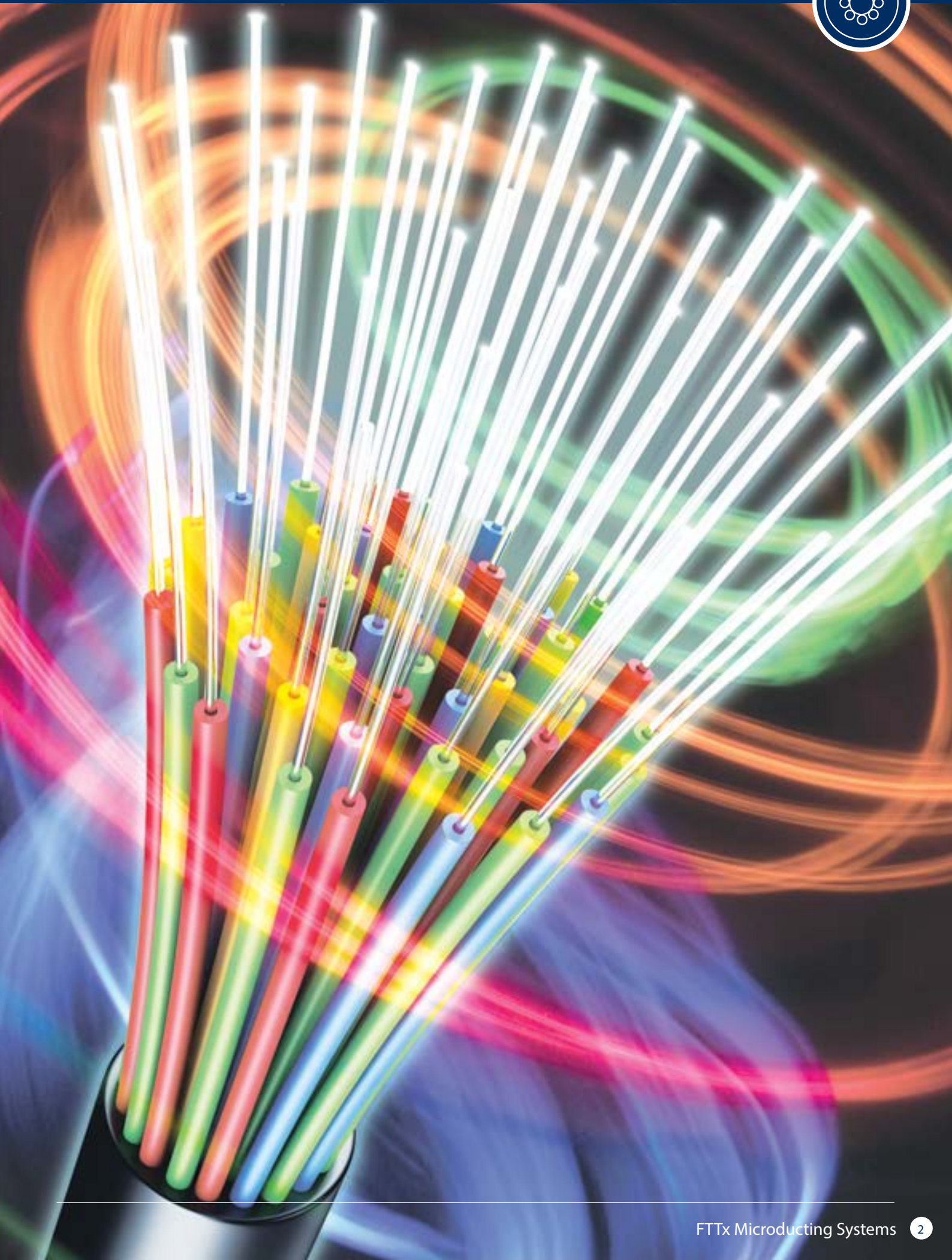
RADIUS
Systems

FTTx

CABLE PROTECTION SYSTEM

Smarter Infrastructure

www.radiustelecoms.com



About Radius Systems

We have been connecting the world with high quality Telecoms and FTTx products for over 30 years.

We have operated in the telecoms market since 1988 and we have a dedicated telecoms centre of excellence where our resident team of expert engineers deliver state of the art technology.

We supply many of the world's top telecom operators, integrators and installers.

Our product offering includes traditional Telecoms Ducting such as HDPE low friction Sub-Duct, HDPE Twinwall and uPVC as well FTTx Microtubing systems for latest generation networks.

In addition, our modular underground Access Chambers are suitable for use across various utilities and are ideal for telecoms applications.

Radius Systems is a part of The Polyplastic Group with manufacturing & distribution across Europe.

Our products have been supplied to:



BS OHSAS 18001:2007
ISO 9001:2015
ISO 14001





Quality

We are committed to the highest levels of quality for the design, manufacturing, performance, durability and delivery of our products. We source the best materials, use both modern and efficient manufacturing, inspection and testing methods to also maintain an effective Quality Management System under the auspices of BS EN ISO 9001:2015.

We focus on high levels of customer service, courtesy, consistency and rapid response to suit our fast moving markets. Our culture is to be continually improving our service, products, systems and processes.



Environment

As a manufacturer, we take our environmental responsibilities very seriously and work internally with customers and in partnership with suppliers to reduce carbon emissions across the whole supply chain.

In addition to the legislative compliance with BS OHSAS 18001:2007 and BS EN ISO 14001:2015, we have won several awards for our environmental initiatives.



Technical Support

We take pride in developing innovative, yet cost effective solutions for telecom infrastructure requirements and aim for long-term sustainable customer partnerships.

We strive to work closely with our partners in terms of technical support, training, product development and supply chain services to ensure that we provide the best tailored solutions.

Our expert team of engineers offer a design and development service for new products, the optimisation of existing products, and provide full technical field service backup for our products.



Health & Safety

The health and safety of our employees and customers is at all times of paramount importance to Radius Systems.

In addition to compliance with BS OHSAS 18001:2007 for the manufacture of polyethylene and PVC pipes, fittings for telecoms, gas, water and industrial applications, we also adhere to good working practices across our whole business, which is essential to achieve the high standards that we and our customers expect.

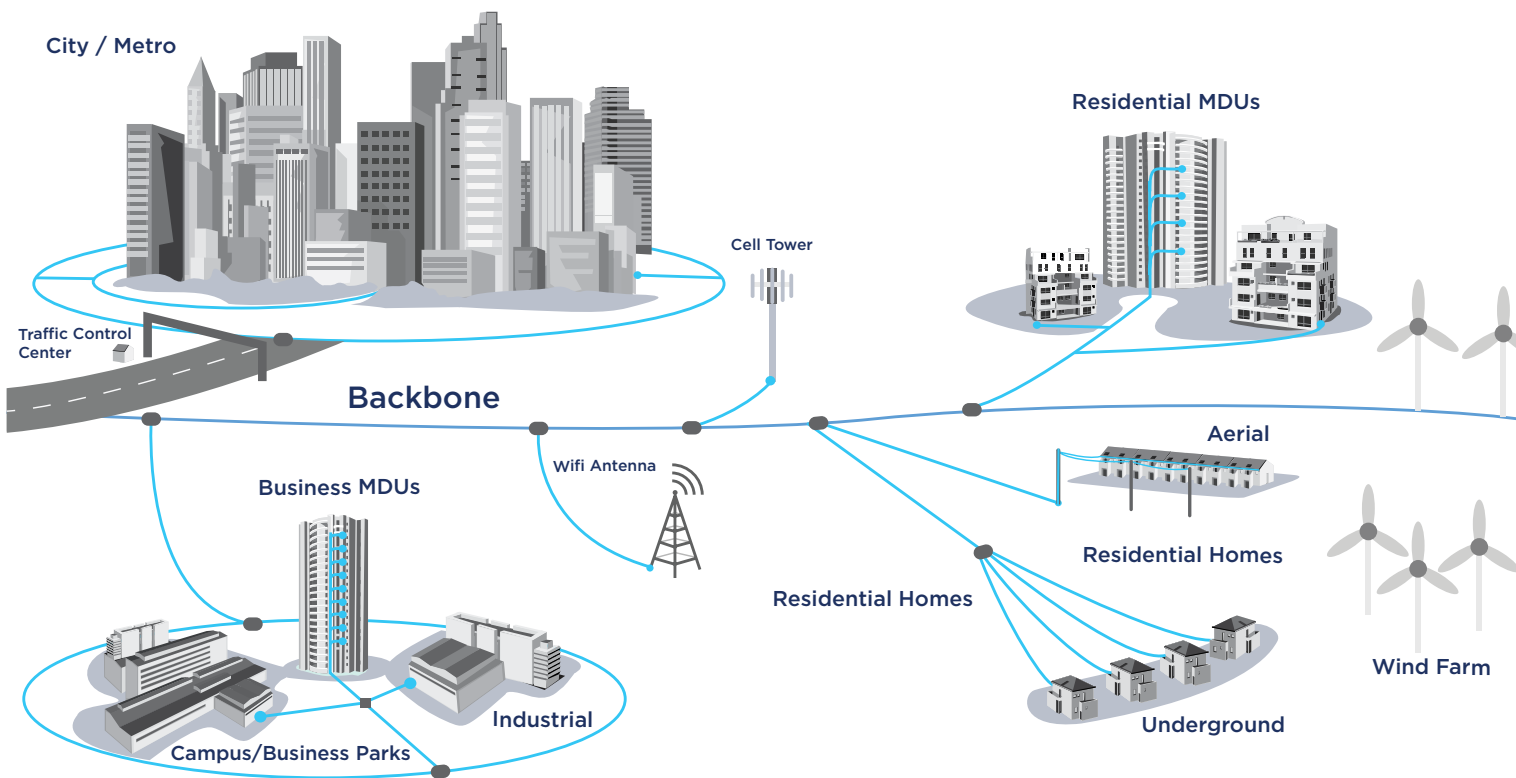




Radius FTTx Solutions

We offer a comprehensive range of ducting infrastructure solutions suitable for the numerous applications of FTTx networks. Our product offering has been specially designed and developed to provide optimal performance for cable installation by blowing method. The range is suitable for use with the latest mini fibre optic cables and blown fibre units.

FTTH Architecture



Applications

- Fibre to the Home (FTTh)
- Multiple Dwelling Units (MDUs)
- In Building
- Campus (University, Hospital, Military)
- Business Park/Industrial
- City/Metropolitan
- Long-Distance
- Telemetry and Intelligent Transport systems
 - Rail, motorways, wind farms, oil/gas pipelines, utilities, housing projects
- Fibre to the Cabinet (FTTc)
- Mobile Phone Mast Connections
- 5G & Wifi Antennas & Smart Cities
- Overhead
- Cable TV
- Security



FTTx

TECHNOLOGY
Fibre

Microducting

FTTB

FTTC

Fibre To The Cabinet

Telecoms

MiniGlide

Fibre To The Curb

Fibre To The Building

MicroGlide

FTTN

Microducting

Broadband

Radius Systems

Infrastructure

FTTC

Connectors

TWINWALL

Networks

Matrix[®] Closures

Access Chambers

Sub-Duct



There are several ways to install an FTTx network dependent on the environment in which you are deploying. We have systems to suit each installation method.



Existing Ducts (Direct Install)

- Installation into existing ducts
- Individual tubes or single sheath bundles



Direct Bury/Trenching

- Install directly into the ground, where there are no ducted networks
- Heavy sheath construction
- Ducting offers protection from weather, temperature changes, impact and physical damage



Trenching/Slot-Cutting

- Narrow trenches are cut at shallow depth in an existing roadway
- Minimal disruption
- Restored with minimum renovation
- Road construction strength retained



Narrow Trenching

- Narrow trenches are cut at shallow depth in an existing roadway
- Minimal disruption
- Restored with minimum renovation
- Road construction strength retained





Mole Ploughing

- Specialist machines dig the trench and lay the duct in one operation
- Special heavy duty tube assemblies



Aerial/Semi Aerial

- Catenary constructions, figure of 8
- Poles & facade applications
- Weathering and UV resistance



No Dig Solutions:

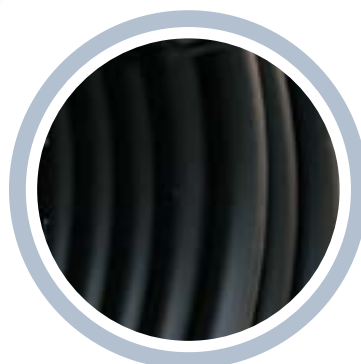
Sewers/Tunnels/Waterway

- Install into existing infrastructure typically 60% faster than other installation methods
- Little traffic/pedestrian disruption



Impact Molding

- Horizontal Directional Drilling (HDD)
- Trenchless Solutions
- Quick and cost effective
- Environmentally friendly



FTTx Microducting Systems



Specifically designed for FTTx networks
and tailored to customer requirements

FTTx is becoming a necessity to meet the demands of today's high speed and high data volume market requirements. Home and commercial demands are ever increasing with bandwidth requirements of the customer benchmarked against the fastest speeds available. Radius offers an extensive range of FTTx solutions to top operators, integrators and installation professionals that seek to deploy fibre to their customers.

Modular tubing infrastructure is based on small diameter tubes, supplied loose or bundled in cable-like assemblies to suit different applications and cable sizes. Flexible multi-tube systems allow for future expansion without the initial fibre outlay, as each tube is populated when required by blowing in fibre mini-cable or blown fibre units, leaving empty tubes to satisfy further demand.

We offer two standard microtubing systems; MiniGlide™, based on 7 to 20mm tubes, and MicroGlide™, based on 3 to 6mm tubes. Designed for scalable and economic installation, our microducting systems enable rapid and simple fibre deployment from trunk networks through to the end user.

Radius pipe systems are accredited to the following Quality Management Systems:

BS EN ISO 9001:2015 | BS EN ISO 14001:2004

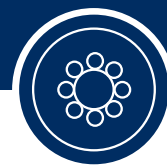
Radius products are manufactured and tested to international and customer standards.



Certificate No. EMS 507229

Certificate No. FMS 50728

KM 62102



Microducting Systems Benefits

- Deferred capital cost
- No need to guess future fibre requirements
- Maximised network capacity
- Rapid installation and short response time
- Flexible network expansion, connection and upgrade
- Fast and easy branching-off
- Point to point fibre connections
- Limited splicing
- Reduced engineering costs
- Mid-span access at any location, at any time
- No disruption to live fibre

Outdoor Installations



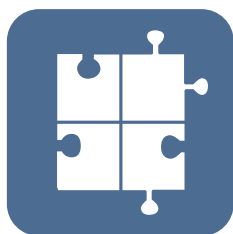
- Direct Bury
- Direct Install
- Metallic
- Non-Metallic

Indoor Installations



- Low Fire Hazard (LFH)
- Low Smoke Zero Halogen (LSZH)
- Intermediate fire hazard and general fire resistance (IFH)

Special Assemblies



- Aerial
- Armoured
- Anti-Termite
- Anti-Rodent
- Chemical Resistant

Product Customisation

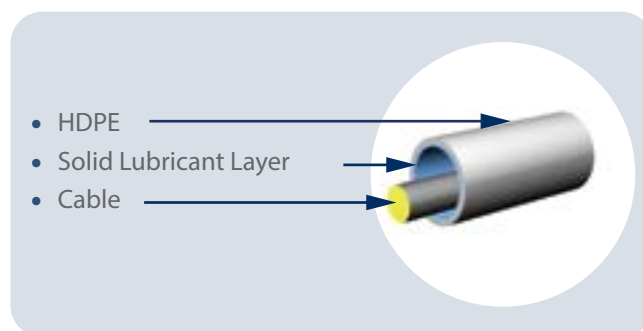


Your choice of configuration, tube, sheath colours, print line and packaging

Class Leading Low Friction Properties

All our Miniglide™ and Microglide™ products feature a specially engineered solid layer of lubricant, evenly distributed on the inner wall by co-extrusion. This provides a permanent low friction surface for the durability of the duct.

Radius products offer excellent low friction values allowing long installation lengths of delicate fibre optic cable, by pulling or blowing.





Standard Low Friction Tubing Configurations

Our tubing can be bundled in assemblies from 1 to 24-way. Individual microducts are available with ribbed or smooth bore, as required. Assemblies are available in a variety of sheathing options, suitable for Direct Install, Direct Bury or Fire Retardant (LSZH) applications, and can be customised to meet specific environmental challenges.

Direct Bury



The Radius Miniglide system is manufactured in accordance with the requirements of Germany's Standard Material Concept for governmental funding of broadband network builds.

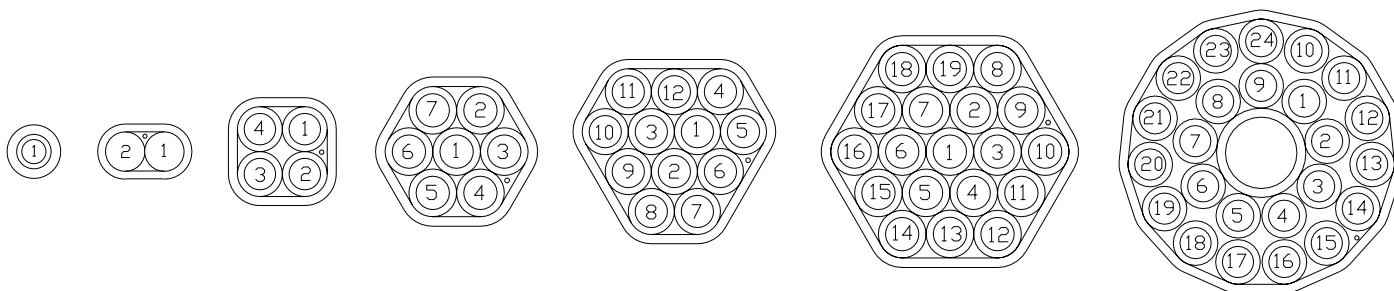
The above shows typical 1 - 24 way configurations and is for illustration only. Other colours and sheathing options are available.

Direct Bury/Direct Install



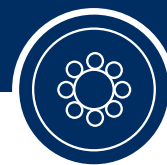
The above shows typical 1 - 24 way configurations and is for illustration only. Other colours, including DIN VDE 888 colour coding, EIA598 colour configuration and sheathing options are available.

In Building (LSZH)



White is the standard colour with numbering, other colour options are available for LSZH.





HDPE LOW FRICTION TUBES



Standard Wall OD/ID (mm)	Drum Length (m)					
	500	1000	2000	2500	4000	5000
3/2.1	•	•				
4/2.7	•	•	•		•	
5/3.5	•	•	•		•	
6/3.5	•	•	•		•	
6/4	•	•	•		•	•
7/5.5	•	•	•		•	•
8/6	•	•	•		•	
10/8	•	•	•	•		
12/9	•	•	•			
12/10	•	•	•			
14/11	•	•	•			
14/12	•	•	•			

Options

- Pre-roped / Pre-taped
- Pre-cabling
- Available with smooth or ribbed inner wall
-

Features

- Permanent low friction inner coating for enhanced blowing performance
- Supplied as single tubes or assemblies
- Polyethylene (PE) Microducts
- Excellent crack and crush resistance
- Solid and translucent colours
- Striped option available

*Datasheets and other sizes available on request ODs/IDs. Other drum lengths available on request.

Colour Range



Thick Wall OD/ID (mm)	Drum Length (m)					
	500	1000	2000	2500	4000	5000
4/2.1	•	•	•		•	
5/2.1	•	•	•		•	
5/2.5	•	•	•		•	
6/2.7	•	•	•		•	
7/3.5	•	•	•		•	•
7/4	•	•	•		•	•
8/3.5	•	•	•		•	•
8/4	•	•	•		•	
8/5	•	•	•		•	
10/6	•	•	•	•		
12/8	•	•	•			
14/10	•	•	•			
16/10	•	•	•			
16/12	•	•	•			
18/12	•	•	•			
18/14	•	•	•			
20/14	•	•	•			
20/15	•	•	•			
20/16	•	•	•			





LOW FIRE HAZARD TUBES



Standard Wall OD/ID (mm)	Drum Length (m)			
	500	1000	2000	4000
3/2.1	•	•		
5/2.1	•	•	•	•
5/2.5	•	•	•	•
5/3.5	•	•	•	•
7/4	•	•	•	•
7/5.5	•	•	•	•
8/5.5	•	•	•	
8/6	•	•	•	
10/6	•	•	•	
10/8	•	•	•	
12/8	•	•	•	
12/9.6	•	•	•	
14/10	•	•	•	
16/12	•	•	•	
20/16	•	•	•	

Features

- Fire retardant and halogen free microducts designed to meet the requirements of IEC 60332-3 and IEC 60332-1
- Permanent low friction inner coating for enhanced blowing performance
- Smooth or ribbed inner wall
- Solid white colour as standard

*Datasheets and other sizes available on request ODs/IDs.
Other drum lengths available on request.



Direct Bury Assemblies

DIRECT BURY METAL FREE



Features

- Simple and robust assemblies
- Heavy duty crush resistant thick walled tubes
- Thin outer PE or PP sheath
- Suitable for slot cut installation, micro & narrow trenching
- Can be installed directly into prepared ground

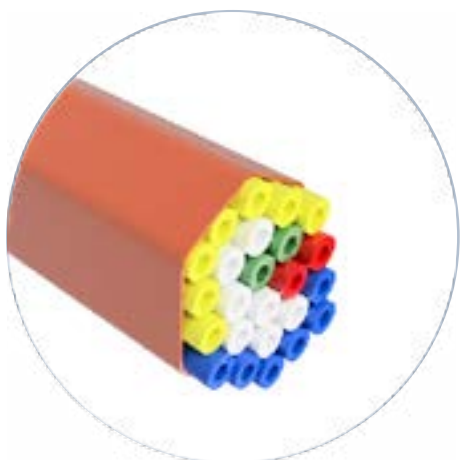
*Other sizes and configurations available on request.

*Datasheets available on request

Tube OD/ID	Configuration	Assembly OD (mm)*	Drum Length (m)	
			1000	2000
4/2.1	2	9.4 x 5.4	•	•
	4	11.1 x 9.4	•	•
	7	13.4 x 12.3	•	•
	12	17.6 x 15.8	•	•
	19	19.3 x 21.4	•	•
	19 R	21.4	•	•
	24	19.3 x 25.4	•	•
	24+1	25.4	•	•
7/4	2	15.4x 8.4	•	•
	4	18.3 x 15.4	•	•
	7	22.4 x 20.5	•	•
	12	29.8 x 26.6	•	•
	19	36.4 x 26.6	•	•
	19 R	36.4	•	•
	24	43.4 x 32.7	•	•
	24+1	43.4	•	•
10/6	2	21.5 x 11.5	•	•
	3	20.2 x 21.5	•	•
	4	21.5 x 25.6	•	•
	7	31.5 x 28.8	•	•
	8	46.5 x 20.16	•	•
	12	41.5 x 37.5	•	•
	14	46.5 x 37.5	•	•
	24	61.5 x 46.1	•	•
12/8	24R	60.2	•	•
	1	13.5	•	•
	2	25.5 x 13.5	•	•
	3	25.5 x 23.9	•	•
	4	30.5 x 25.5	•	•
	5	32.9 x 31.9	•	•
	7	37.5 x 34.3	•	•
14/10	1	15.5	•	•
	2	29.5 x 15.5	•	•
	3	29.5 x 27.6	•	•
	4	35.3 x 29.5	•	•
	5	43.5 x 27.6	•	•
	6	42.1 x 40.8	•	•
	7	43.5 x 39.8	•	1500
14/11	2	29.5 x 15.5	•	•
	3	29.5 x 27.6	•	•
	4	35.3 x 29.5	•	•
	6	42.1 x 40.8	•	•
	7	43.5 x 39.8	•	1500
16/10	2	33.5 x 17.5	•	•
	3	33.5 x 31.4	•	•
	4	40.2 x 33.5	•	•
	7	49.5 x 45.2	•	•
16/12	2	33.5 x 17.5	•	•
	3	33.5 x 31.4	•	•
	4	40.2 x 33.5	•	•
	7	49.5 x 45.2	•	•



DIRECT BURY METAL FREE



Tube OD/ID (mm)	Configuration # of Tubes	Assembly OD (mm)*	Drum Length (m)	
			1000	2000
18/12	2	37.5 x 19.5	•	•
	3	35.1 x 37.5	•	•
	4	37.5 x 45.0	•	•
18/14	2	37.5 x 19.5	•	•
	4	37.5 x 45.0	•	•
	7	55.5 x 50.7	•	•
	8	55.5 x 53.1	•	•
20/14	2	41.5 x 21.5	•	•
	3	41.5 x 38.8	•	•
	4	49.8 x 41.5	•	•
20/15	2	41.5 x 21.5	•	•
	3	41.5 x 38.8	•	•
	4	49.8 x 41.5	•	•
20/16	2	41.5 x 21.5	•	•
	3	41.5 x 38.8	•	•
	4	49.8 x 41.5	•	•

The Radius Miniglide system is manufactured in accordance with the requirements of Germany's Standard Material Concept for governmental funding of broadband network builds.

MICROTRENCHING / SLOT CUTTING



OD/ID (mm)	Configuration # of Tubes	Assembly OD (mm)*	Drum Length (m)		
			500	1000	2000
10/6	8	10.0 x 10.1	•	•	•
	3	61.6 x 21.6	•	•	•
20/15	4	21.5 x 82.3	•	•	•
	5	113.9 x 21.3	•	•	•
16/12	2	33.5 x 17.5	•	•	•
	3	33.5 x 31.4	•	•	•
	4	40.2 x 33.5	•	•	•
	7	49.5 x 45.2	•	•	•

- Slimline assemblies designed for use in narrow width trenches.



MOLE PLOUGHING



OD/ID (mm)	Configuration	Assembly	Drum Length (m)		
(mm)	# of Tubes	OD (mm)*	500	1000	2000
7/4	12	33.4 x 39.4	•	•	•
	24	47.7	•	•	
14/10	1	21.5	•	•	•
	2	35.5 x 21.5	•	•	•
	3	37.7	•	•	•
	4	41.3	•	•	•
	5	45.3	•	•	
	6	49.5	•	•	
	7	49.5	•	•	
16/12	1	22.0	•	•	•
	2	38.0 x 22.0	•	•	•
	3	38.0 x 35.8	•	•	•
	4	38.0 x 44.6	•	•	•
	5	54.0 x 35.8	•	•	
	6	49.7 x 46.0	•	•	
	7	54.0 x 49.7	•	•	
10/6	12	33.4 x 39.4	•	•	•
	24	47.7	•	•	
12/8	1	21.5	•	•	•
	2	35.5 x 21.5	•	•	•
	3	37.7	•	•	•
	4	41.3	•	•	•
	5	45.3	•	•	
	6	49.5	•	•	
	7	49.5	•	•	
20/14	1	22.0	•	•	•
	2	38.0 x 22.0	•	•	•
	3	38.0 x 35.8	•	•	•
	4	38.0 x 44.6	•	•	•
	5	54.0 x 35.8	•	•	
	6	49.7 x 46.0	•	•	
	7	54.0 x 49.7	•	•	

- We offer a range of very robust ducts, microducts and assemblies, particularly suited to rural broadband applications.



DIRECT BURY METAL FREE



Tube OD/ID (mm)	Configuration # of Tubes	Assembly OD (mm)*	Drum Length (m)		
			500	1000	2000
5/3.5	1	10.0	•	•	•
	2	17.0 x 12.0	•	•	•
	4	19.7	•	•	•
	7	22.6	•	•	•
	12	27.9	•	•	•
	19	32.6	•	•	•
	24+1	37.6	•	•	•
10/8	1	19.8	•	•	•
	2	29.8 x 19.8	•	•	•
	4	33.9	•	•	•
	7	39.8	•	•	•
12/10	1	19.0	•	•	•
	2	31.0 x 19.0	•	•	•
	3	34.4	•	•	•
	4	37.6	•	•	•
	7	45.5	•	•	•

Features

- Can be installed into prepared ground where a non-metallic solution is required (such as an area with a risk of lightning)
- Heavy/Dual PE sheath for maximum crush resistance
- Optional non-metallic moisture barrier (water blocking tape)
- Integral ripcord for easy sheath removal

* Supplied as standard without water blocking tape, this is available on request.

*Datasheets available on request



DIRECT BURY ALUMINIUM



Tube OD/ID (mm)	Configuration # of Tubes	Assembly OD (mm)*	Drum Length (m)		
			500	1000	2000
5/3.5	1	11.9	•	•	•
	2	16.9 x 11.9	•	•	•
	4	19	•	•	•
	7	22.5	•	•	•
	12	29.9	•	•	•
	19	34.7	•	•	•
	24	39.7	•	•	•
10/8	1	18.0	•	•	•
	2	28.0 x 18.0	•	•	•
	4	33.9 x 29.7	•	•	•
	7	39.7 x 37.0	•	•	•
12/10	1	20.0	•	•	•
	2	32.0 x 20.0	•	•	•
	4	38.6 x 33.6	•	•	•
	7	45.6 x 42.4	•	•	•

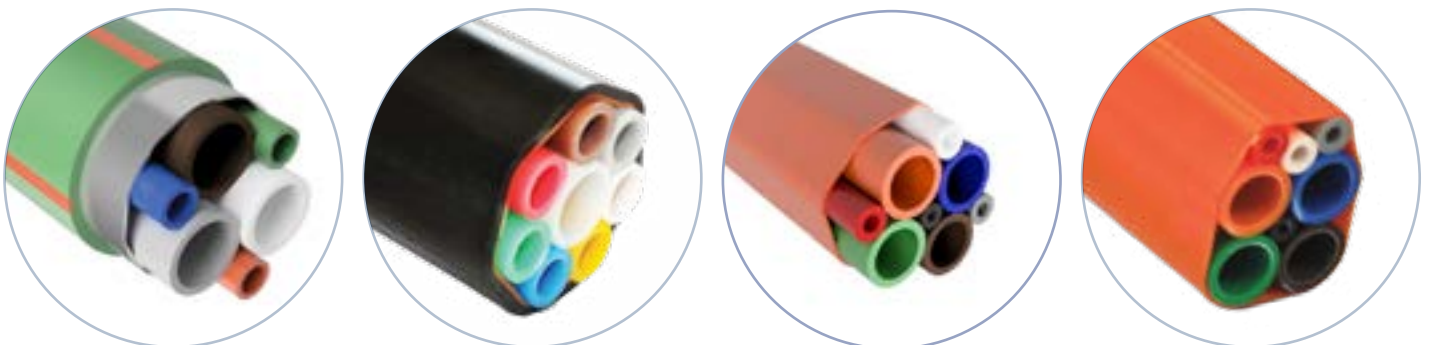
Features

- Can be installed directly into prepared ground
- Heavy/Dual PE sheath for maximum crush resistance
- Maximum moisture protection provided by a 150µm layer of aluminium
- Integral ripcord for easy sheath removal
- Also available with tracer wire

*Datasheets available on request

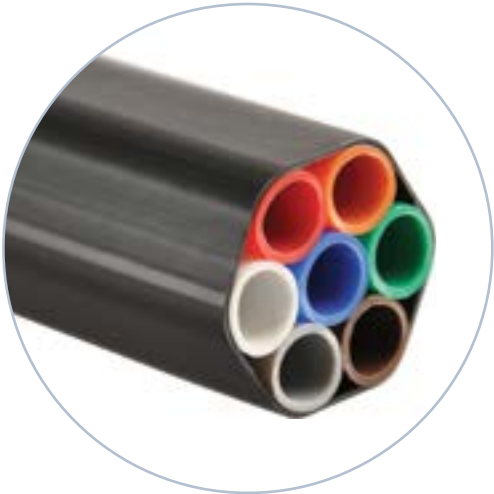
HYBRID ASSEMBLIES

Radius understands that no two projects are the same and we offer bespoke solutions to suit your particular project requirements, including hybrid assemblies comprising of microducts of various diameters.





DIRECT INSTALL METAL FREE



Tube OD/ID (mm)	Configuration # of Tubes	Assembly OD (mm)*	Drum Length (m)		
			500	1000	2000
5/3.5	1	8.7	•	•	•
	2	13.7 x 8.7	•	•	•
	4	15.8	•	•	•
	7	18.7	•	•	•
	12	24.7	•	•	•
	19	29.5	•	•	•
	24	34.5	•	•	•
10/8	1	18.0	•	•	•
	2	28.0 x 18.0	•	•	•
	3	23.2 x 21.8	•	•	•
	4	27.3 x 23.2	•	•	•
	7	33.4 x 30.7	•	•	•
12/10	1	15.9	•	•	•
	2	27.9 x 15.9	•	•	•
	3	27.9 x 26.3	•	•	•
	4	32.9 x 27.9	•	•	•
	7	40.4 x 37.2	•	•	•

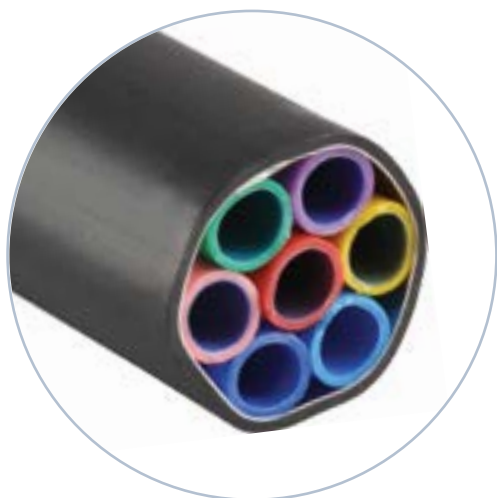
Features

- Can be installed directly into a duct or sub-duct where a non-metallic solution is required (such as an area with a risk of lightning)
- Non-metallic moisture barrier provided (water blocking tape, available on request)
- Light PE sheath
- Integral ripcord for easy sheath removal
- Also available with tracer wire

*Datasheets available on request



DIRECT INSTALL ALUMINIUM



Tube OD/ID (mm)	Configuration # of Tubes	Assembly OD (mm)*	Drum Length (m)		
			500	1000	2000
5/3.5	1	8.7	•	•	•
	2	13.7 x 8.7	•	•	•
	4	15.7	•	•	•
	7	18.7	•	•	•
	12	23.9	•	•	•
	19	28.7	•	•	•
	24	33.7	•	•	•
10/8	1	13.7	•	•	•
	2	23.7 x 13.7	•	•	•
	3	22.4 x 23.7	•	•	•
	4	27.8 x 23.7	•	•	•
	7	33.7 x 31.0	•	•	•
12/10	1	15.7	•	•	•
	2	27.7 x 15.7	•	•	•
	3	27.7 x 26.1	•	•	•
	4	32.6 x 27.7	•	•	•
	7	39.7 x 36.5	•	•	•

Features

- Can be installed directly into a duct or sub-duct
- Light PE sheath
- Maximum moisture protection provided by a 150µm of layer of aluminium
- Integral ripcord for easy sheath removal

*Datasheets available on request





RADIUS

“ With many years of serving the telecoms market, we know that there are times when you need special tube constructions to meet your network requirements. We pride ourselves on providing tailored solutions and our expert development engineers enjoy devising special application products to meet your needs. ”



LOW FIRE HAZARD (LFH)



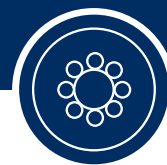
Tube OD/ID (mm)	Configuration # of Tubes	Assembly OD (mm)*	Drum Length (m)		
			500	1000	2000
3/2.1	1	4.2	•	•	•
	2	1.2 x 7.2	•	•	•
	4	7.2 x 8.4	•	•	•
	7	9.4 x 10.2	•	•	•
	12	12 x 13.3	•	•	•
	19	14.6 x 16.2	•	•	•
	24	14.6 x 19.2	•	•	•
5/3.5	1	6.9	•	•	•
	2	12.0 x 7.0	•	•	•
	4	14.1 x 12.0	•	•	•
	7	17.0 x 15x7	•	•	•
	12	22.4 x 20.1	•	•	•
	19	27.0 x 24.3	•	•	•
	24	32.0 x 31.8	•	•	•
10/8	1	13.7	•	•	•
	2	23.7 x 13.7	•	•	•
	4	27.8 x 23.7	•	•	•
	7	33.7 x 31.0	•	•	•
12/9.6	1	13.8	•	•	•
	2	25.8 x 13.8	•	•	•
	4	30.8 x 25.8	•	•	•
	7	37.8 x 34.6	•	•	•
16/12	1	13.7	•	•	•
	2	23.7 x 13.7	•	•	•
	4	27.8 x 23.7	•	•	•
	7	33.7 x 31.0	•	•	•
20/16	2	43.0 x 23.0	•	•	•
	3	43.0 x 40.3	•	•	•
	4	43.0 x 51.3	•	•	•

Features

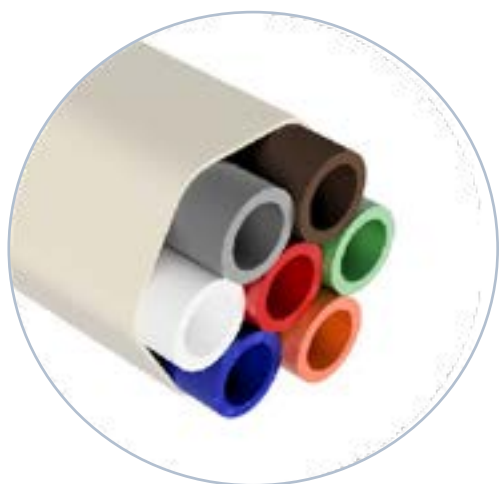
These assemblies are suitable for indoor applications offering varying levels of protection against fire and low smoke and zero halogen emissions

- Low Smoke Zero Halogen (LSZH) sheath and primary tubes
- Low flammability, low smoke and zero halogen emissions
- Designed to meet the requirements of IEC 60332-3 and IEC 60332-1

*Datasheets available on request



GENERAL FLAMMABILITY RESISTANCE



Tube OD/ID (mm)	Configuration # of Tubes	Assembly OD (mm)*	Drum Length (m)		
			500	1000	2000
3/2.1	1	4.2	•	•	•
	2	4.2 x 7.2	•	•	•
	4	7.2 x 8.4	•	•	•
	7	9.4 x 10.2	•	•	•
	12	12 x 13.3	•	•	•
	19	14.6 x 16.2	•	•	•
5/3.5	24	14.6 x 19.2	•	•	•
	1	6.9	•	•	•
	2	12.0 x 7.0	•	•	•
	4	14.1 x 12.0	•	•	•
	7	17.0 x 15.7	•	•	•
	12	22.4 x 20.1	•	•	•
10/8	19	27.0 x 24.3	•	•	•
	24	32.0 x 31.8	•	•	•
	1	12.0	•	•	•
	2	22.0 x 12.0	•	•	•
12/10	4	26.1 x 22.0	•	•	•
	7	32.0 x 29.3	•	•	•
	1	14.2	•	•	•
	2	26.2 x 14.1	•	•	•
	4	31.2 x 26.2	•	•	•
	7	38.2 x 35.0	•	•	•

Features

- LSZH sheath and PE primary tubes
- Improved fire performance compared with all PE products
- Designed to minimise the evolution of smoke and corrosive gases
- Designed to meet performance requirements of IEC 60332-1

*Datasheets available on request



GENERAL FLAMMABILITY RESISTANCE



Tube OD/ID (mm)	Configuration # of Tubes	Assembly OD (mm)*	Drum Length (m)		
			500	1000	2000
5/3.5mm	1	7.5	•	•	•
	2	12.5 x 7.5	•	•	•
	4	15.5	•	•	•
	7	18.5	•	•	•

Features

- PVC sheath and PE primary tubes
- Provides a basic level of fire protection for general purpose applications
- Meets IEC 60332-1

*Datasheets available on request

RISER RATED



Tube OD/ID (mm)	Configuration # of Tubes	Assembly OD (mm)*	Drum Length (m)		
			500	1000	2000
5/3.5mm	1	6.9	•	•	•
	2	11.9 x 6.9	•	•	•
	4	14.0 x 11.9	•	•	•
	7	16.9 x 15.6	•	•	•
	12	22.2 x 19.9	•	•	•
	19	26.9 x 24.2	•	•	•
	24	31.9 x 31.6	•	•	•

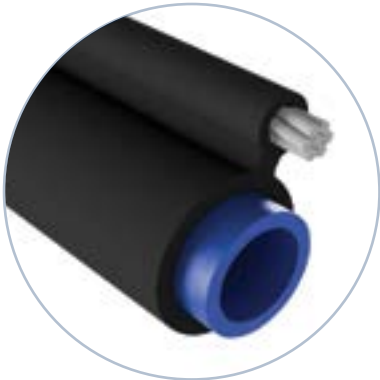
Features

- For use as riser tubing in buildings
- Approved to RISER UL 1666 and CUL 1666 by Underwriter Laboratories

*Datasheets available on request



AERIAL FIGURE 8



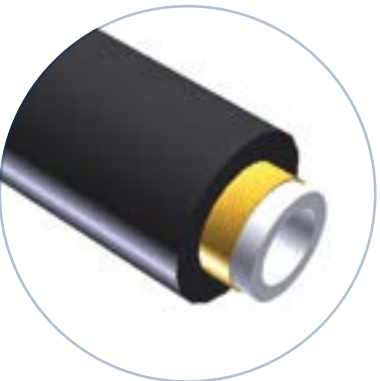
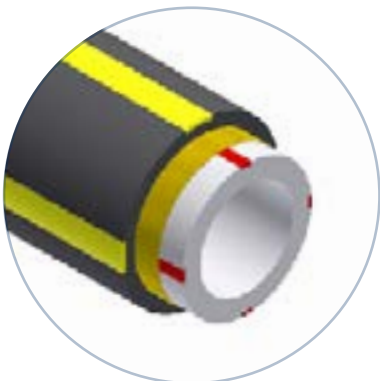
OD/ID (mm) (mm)	Configuration # of Tubes	Assembly OD (mm)*	Drum Length (m)		
			500	1000	2000
16/12	1	21x30	•	•	•
18/14	1	23x32	•	•	•
28/24	1	33x42	•	•	•

Features

- Fast point to point installation
- Light weight construction
- Small diameter, low visual impact
- UV stabilised
- Compatible with underground microtubing systems
- Metallic and metal free ADSS option.

*Datasheets available on request

ADSS DROP TUBE



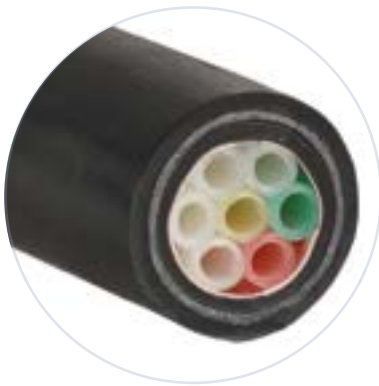
- Single tube configuration for premise drop
- Available in metal free version with GRP strength members
- UV Stabilised
- Suitable for outdoor storage
- Stress crack resistant

*Datasheets available on request



ANTI RODENT (DIRECT BURY)

Custom Specials assemblies available on request



Features

- Anti-rodent constructions are available to suit user requirements, using combinations of glass fibres, armour or rodent repellent additive as required
- Customised sizes and assemblies on request

*Datasheets available on request

ARMoured (DIRECT BURY)



Features

- Armoured assembly, low friction tube surrounded with a corrugated steel armoured layer and an outer HDPE sheath. Suitable for direct burial, heavy duty and anti-rodent applications.

*Datasheets available on request



ANTI-TERMITE (DIRECT BURY)



Features

- For use where termites are problematic
- Nylon layer provides protection against attack by termites

*Datasheets available on request

DIRECT BURY CHEMICAL RESISTANT

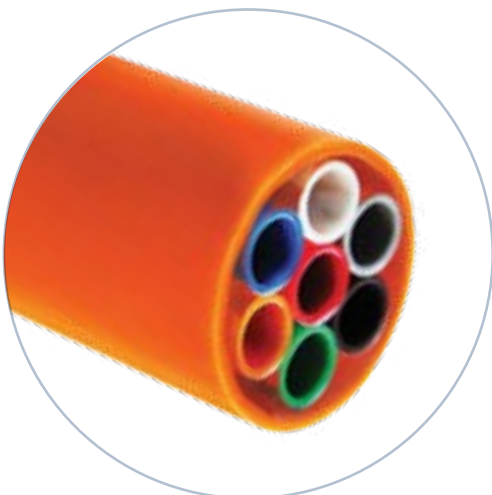


Features

- For use in environments at risk of chemical contact
- Maximum chemical resistance is provided through four layers of protection; an initial aluminium layer, an inner PE sheath, a chemical resistant layer and an outer PE sheath

*Datasheets available on request

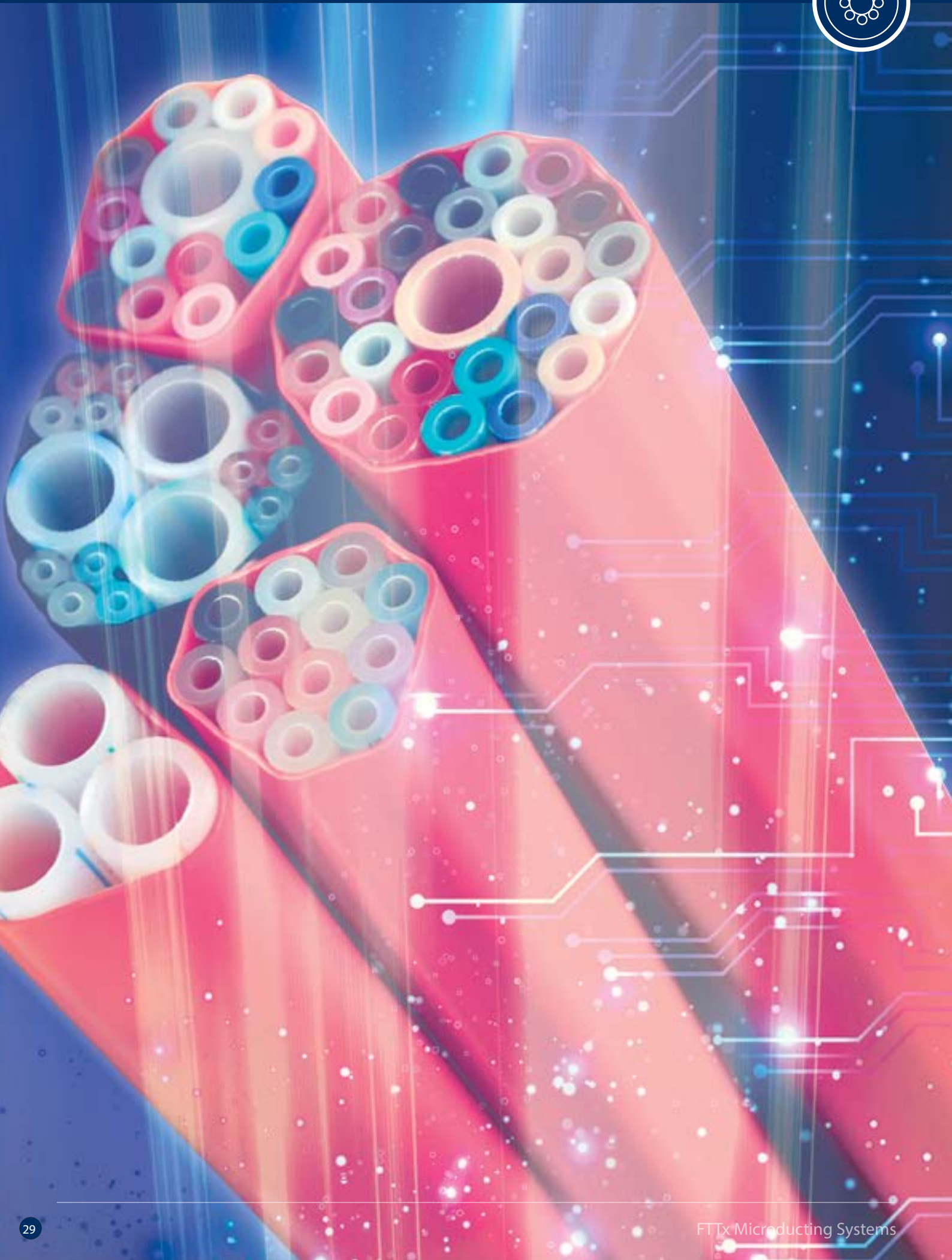
FILLED BUNDLE



Features

- A range of metal free microduct assemblies, a filling between the interstices of the tubes in an extremely strong construction with very good concentricity

*Datasheets available on request





Our easy to use range of Push-Fit Connectors and Sealing Systems are the perfect complement to our MiniGlide and MicroGlide tubing

Connectors are available in a range of sizes for 3 to 20mm microduct outer diameters (OD). Other push-fit connectors such as close down assemblies and bulkhead connectors are available on request.

DIRECT BURY CONNECTOR



Tube (mm)	Tube (mm)	Pack Qty
3	12	100
4	14	100
5	16	100
6	18	100
7	20	100
8	25	100
10		100

Features

- A tough straight connector suitable for direct buried jointing of thick walled microtubes
- Complete with locking clip
- Push fit connection

*Datasheets available on request



DIRECT BURY END STOP



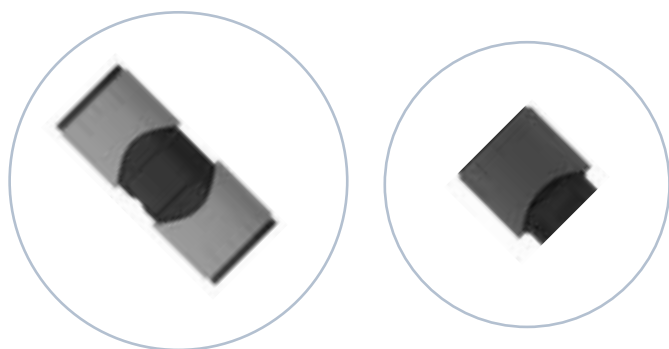
Tube OD (mm)	Pack Qty
3	100
4	100
5	100
7	100
8	100
8.5	100
10	100
12	100
14	100
15	100
16	100
18	100

Features

- A tough end stop for sealing the end of direct buried thick walled microtubes

*Datasheets available on request

DIRECT BURY CONNECTOR/END STOP



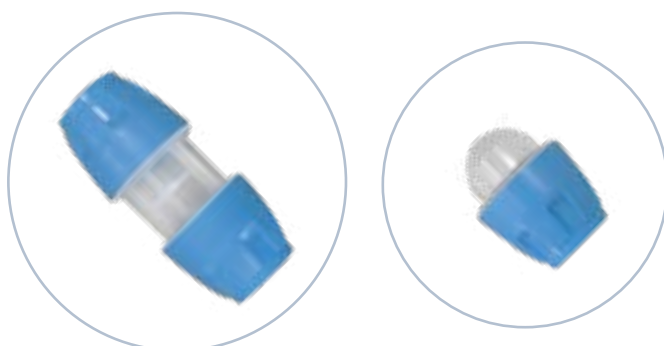
Tube OD/ID (mm)	Pack Qty
Straight Connector	
7/4	100
7/3.5	100
8/4	100
14	100
End Stop	
7	100
8	100
14	100

Features

- Suitable for direct buried applications.
- Push fit connection
- Direct buried application

*Datasheets and other sizes available on request

DIRECT BURY CONNECTOR/ END STOP



Features

- Suitable for direct buried applications
- Transparent body
- Corrosion resistant
- Push fit connection
- Air and water tight

*Datasheets and other sizes available on request

Tube OD (mm)	Pack Qty
Straight Connector	
7x7	100
8x8	100
10x10	100
12x12	100
14x14	100
16x16	100
20x20	100
End Stop	
7	100
8	100
10	100
12	100
14	100
16	100
20	100



STRAIGHT CONNECTOR



Tube OD (mm)	Tube ID (mm)	Pack Qty
3	2.1	100
4	2.5	100
5	3.5	100
5	2.1	100
7	5.5	100
7	3.5	100
8	6	100
8	3.5	100
10	8	100
14	12	100
14	10	100
16	10	100
16	12	100
18	14	100

Features

- Suitable for direct bury

*Datasheets available on request

END STOP



Tube OD (mm)	Pack Qty
3	100
4	100
5	100
7	100
8	100
10	100
12	100
14	100
16	100

Features

- For sealing the end of an open microtube

*Datasheets available on request

REDUCER



Microduct A Tube OD (mm)	Microduct B Tube OD (mm)	Pack Qty
7	4	100
7	5	100
8	4	100
8	5	100
8	6	100
10	4	100
10	5	100
10/8	6/4.5	100
10/6	6/3.5	100
10	7	100
10	8	100
12	5	100
12	7	100
12	8	100
12	10	100
14/12	10	100
14/10	12	100
14/12	7/5.5	100
14/10	7/5.5	100
14	12	100
16	12	100
16/12	14/10	100
16/12	14/12	100

Features

- For joining microtubes of different outer diameters

*Datasheets available on request

Microduct A Tube OD (mm)	Microduct B Tube OD (mm)	Pack Qty
4	3	10
5	3	10
5	4	10
6	4	10
7	3	10
7	4	10



GAS BLOCK CONNECTOR



Features

- Provides a watertight and gastight seal for connecting microtubes
- Tube to cable seal
- Caters for various cable diameters

*Datasheets available on request

OD Nominal Duct (mm)	Cable OD Range (mm)	Pack Qty
4	Fibre Unit	100
5	Fibre Unit	100
6	1-4	100
7	1-3.8	100
7	2-5.5	100
8	0.5-3.5	100
8	3-6	100
10	1-4	100
10	3-6	100
10	5-8	100
12	3-6	100
12	5-8	100
12	7-10	100
14	3-6	100
14	5-8	100
14	7-10	100
14	9-12	100
16	3-6	100
16	5-8	100
16	7-10	100
16	9-12	100

GAS BLOCK END STOP

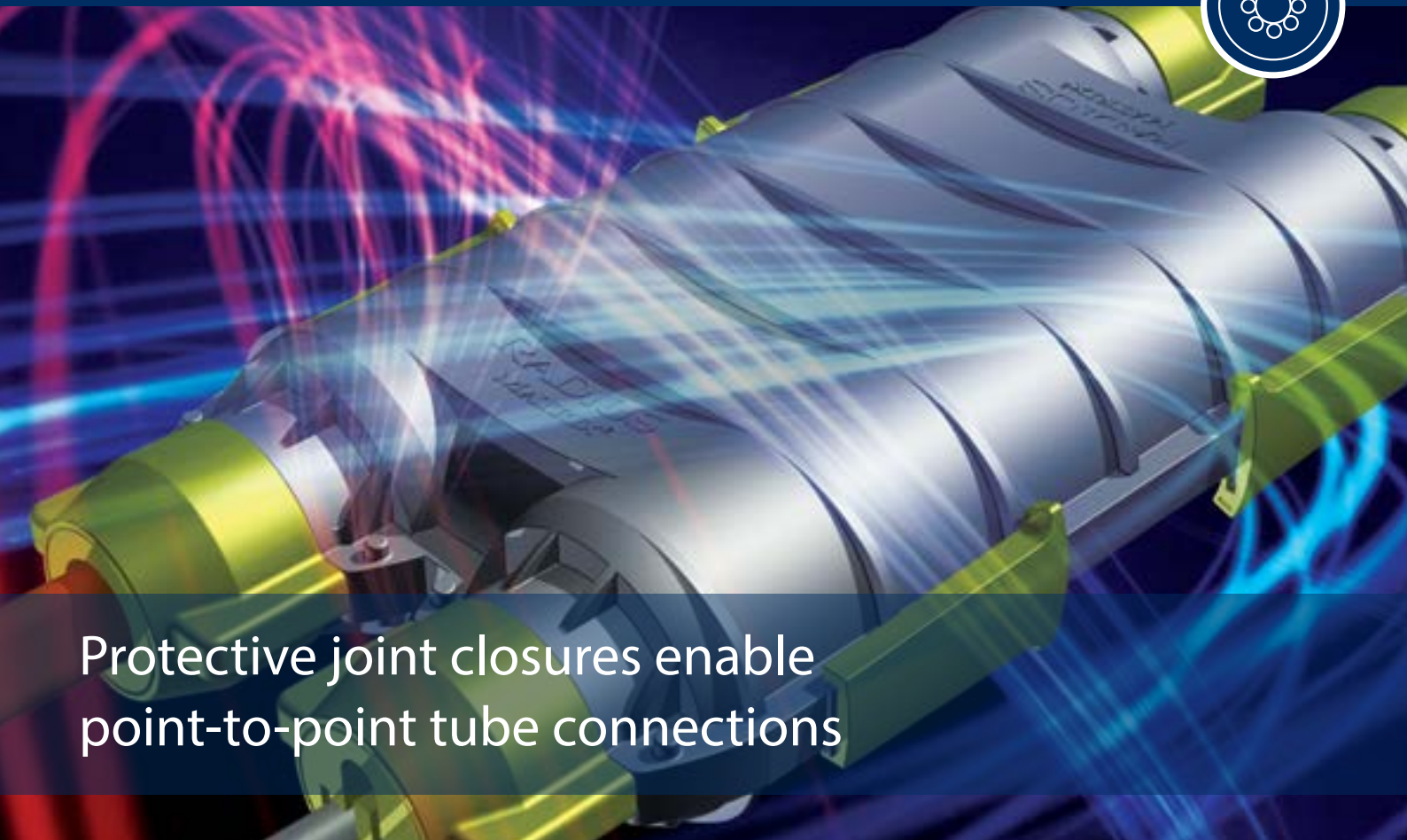


Features

- Provides a watertight and gastight seal for the end of a microtube
- Tube to cable seal
- Caters for various cable diameters

NOTE: Product photos are for illustration only, product/colours may vary.

OD Nominal Duct (mm)	Cable OD Range (mm)	Pack Qty
3	0.5-2.1	100
4	0.5-3	100
5	0.5-3.5	100
6	1-4	100
7	1-4	100
7	2-5.5	100
8	1-4	100
8	3-6	100
10	1-4	100
10	3-6	100
10	5-8	100
12	3-6	100
12	5-8	100
12	7-10	100
14	3-6	100
14	7-10	100
14	5-8	100
14	9-12	100
16	3-6	100
16	5-8	100
16	7-10	100
20	3-6	100
20	5-8	100
20	7-10	100
20	9-12	100



Protective joint closures enable point-to-point tube connections

Tubes can be connected in a straight line or branch-off using Push-Fit Connectors and fibre can then be blown in, as required, through to the end user without interruption/splicing.

Assembly is very simple with no tools required. The assembly can be supplied with all components in place. Matrix² closures consist of two halves which should be fitted around the connection area. The closure is then sealed by sliding on the side clasps and manually tightening the retrofittable endcaps. Cable ties are provided for each port as a temporary aid to maintain the bottom half in place during installation.

Features

- Can be installed in an Access Chamber or buried directly into the ground
- Can be retrofitted and reused
- Easy to install and no tools are required

Benefits

- Matrix² IP68
- Fast & easy, no tools
- Cost Effective
- Operator Friendly
- Excellent Leak Performance



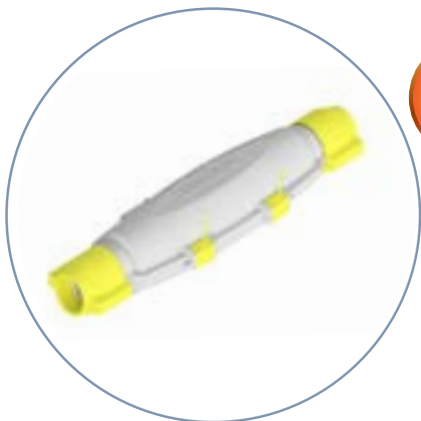
IN LINE CLOSURE MATRIX²



IP68

Duct Construction	Pack Qty
32mm Duct	15
40mm Duct	15
50mm Duct	15
12x5/3.5mm Assembly	15
24x5/3.5 DB Assembly with Aluminium	15
24x5/3.5 DB Assembly with Water Tape	15
3x14/10mm Assembly	15
3x16/12mm Assembly	15
2x14/10mm Assembly	15
7x14/10mm Assembly	15
3x14 Primary Tubes	15
3x16 Primary Tubes	15
12x1 way 5/3.5mm	15

IN LINE CLOSURE MATRIX



IP54

Duct Construction	Pack Qty
32mm Duct	30
40mm Duct	30
50mm Duct	30
12x5/3.5mm Assembly	30
24x5/3.5 DB Assembly with Aluminium	30
24x5/3.5 DB Assembly with Water Tape	30
3x14/10mm Assembly	30
3x16/12mm Assembly	30
2x14/10mm Assembly	30

- Sealing sets contain: 1 x Port Seal, 2 x Port Inserts and 2 x Grip Rings (if applicable).

*Datasheets available on request

T BRANCH JOINT CLOSURE



IP54

For Tube OD (mm)	Pack Qty
50-50-50	25
50-50-40	25
50-50-32	25
50-50-25	25
40-40-40	25
40-40-32	25
40-40-25	25

- Inserts are available to fit various cable/duct ODs

*Datasheets available on request



H BRANCH CLOSURE MATRIX²



IP68

Duct Construction	Pack Qty
32mm Duct	7
40mm Duct	7
50mm Duct	7
12x5/3.5mm Assembly	7
24x5/3.5 DB Assembly with Aluminium	7
24x5/3.5 DB Assembly with Water Tape	7
3x14/10mm Assembly	7
3x16/12mm Assembly	7
2x14/10mm Assembly	7
7x14/10mm Assembly	7
3x14 Primary Tubes	7
3x16 Primary Tubes	7
12x1 way 5/3.5mm	7

- Sealing sets contain: 1 x Port Seal, 2 x Port Inserts and 2 x Grip Rings (if applicable).

*Datasheets available on request

CABLE LOOP BOX



The Cable Loop Box provides safe storage for excess cable and/or ducting. It can be easily mounted to a chamber wall:

- Simply use screws for preformed plastic chambers such as our Radbox® & Quadbox®
- Use screws and wall anchors for concrete or brick chambers.

The ducting can be inserted into the specified seals and the cable then installed around the central core of the Cable Loop Box.

Contact us for a detailed datasheet

BENEFITS

- Protects excess cable or duct from damage
- Capable of storing approx 50m of cable (based on 9mm OD)
- Rodent resistant design with sealed entries
- Total of four cable entries for various options of duct input and output
- Uses the same wide range of seals as Radius Matrix² tube closures
- Retrofittable, can be installed any time, any place
- Ergonomic design for ease of access
- Cable diameter limiting centre core to prevent microbending

External Dimensions	560x560mm
Internal Dimensions	494x494mm
Effective Core Diameter	300mm
Weight	3.6kg
Port sizes	4 x 50mm ports which can be adapted to size with inserts to suit requirements e.g. 40mm, 32mm, 25mm and special sizes on applications.
Seals	Wide range available, specials on application



DIVISIBLE DUCT SEAL



Features

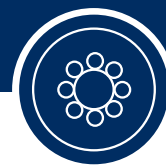
Suitable for gas and watertight sealing of HDPE ducts, which contain mini/micro ducts and/or (fibre optic) cables. The modular system enables easy installation of various cable and duct configurations. The system is divisible and can be retrofitted. Rubber inserts can be custom designed for your specific needs and configuration and will contain (temporary) blind plugs to make the system more flexible at the installation site.

- Gas and water tight up to 0.25 bar
- Suitable for retrofitting
- Easy installation
- Slim design
- Includes cores of the recesses

*Datasheets available on request

*0.5 can be achieved, please contact us.

Duct OD (mm)	Configuration (mm)	Pack Qty
25	6x4	20
	1x12	20
	1x12-7	20
32	2x7 + 1x12	20
	1x10 + 3x7	20
	7x7	20
	1x12 + 1x10 + 1x7.5	20
	3x10	20
	4x10	20
	2x10 + 1C8-14	20
	3x12	20
40	1x14	20
	24x4	10
	2x7 + 1x12	10
	10x7	10
	1x10 + 3x7	10
	8x7 - 1x12	10
	5x10	10
	7x10	10
	3x10 - 1C8-18	10
	4X12	10
	2x12 + 1C8-18	10
	3x14	10
50	2x15 + 2x8, 4-13, 4	10
	4x16	10
	5x12 + 1C8-18, 5mm	10
	5x10 + 1C8-18, 5mm	10
	7x7 + 1C8-18, 5mm	10
	7x14	10
	7x10	10
	7x12	10
	8x7 + 1x14	10
	8x7 + 1x16	10
	8x10	10
	9x10	10
63	10x7 + 1x12	10
	12x7 - 1x14	10
	1x15, 5 + 3x12	10
	18x7	10
	24x7	10
	24x7 + 1x14	10
	22x7 + 1x12	10
	15x10	10
	9x12	10
	12x12	10
7x14	10	
6x16	10	



RETROFITTABLE GAS SEAL



Features

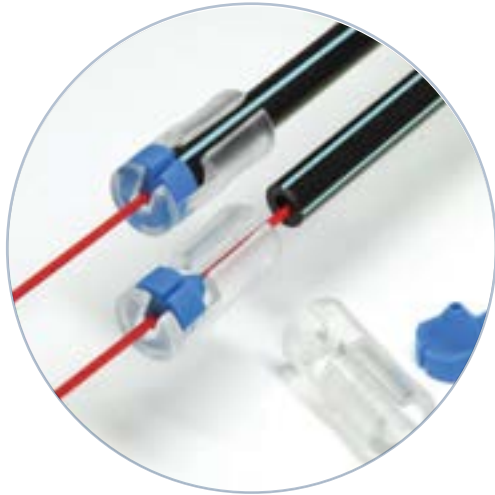
- Suitable for retrofitting
- Easy installation
- Slim design
- Sealing: up to 0.5 bar
- Mechanical Compression Strength: $\geq 1000\text{N}$, 10 sec.

*Datasheets available on request

Duct OD (mm)	Cable/tube OD (mm)	Pack Qty
10	1.5-2.5	25
	2.5-3.5	25
	3.5-5.0	25
	5.0-6.5	25
	6.5-7.5	25
12	1.5-2.5	25
	2.5-3.5	25
	3.5-5.0	25
	5.0-6.5	25
	6.5-8.0	25
14	7.0-8.5	25
	1.5-2.5	25
	2.5-3.5	25
	3.5-5.0	25
	5.0-6.5	25
	6.5-8.0	25
16	8.0-10.0	25
	1.5-2.5	25
	2.5-3.5	25
	3.5-5.0	25
	5.0-6.5	25
	6.5-8.0	25
18	8.0-10.0	25
	3.5-5.0	25
	5.0-6.5	25
	6.5-8.0	25
	8.0-9.5	25
20	9.4-12.0	25
	3.5-5.0	25
	5.0-6.5	25
	6.5-8.0	25
	8.0-10.0	25
	9.4-12.0	25



RETROFITTABLE GAS SEAL



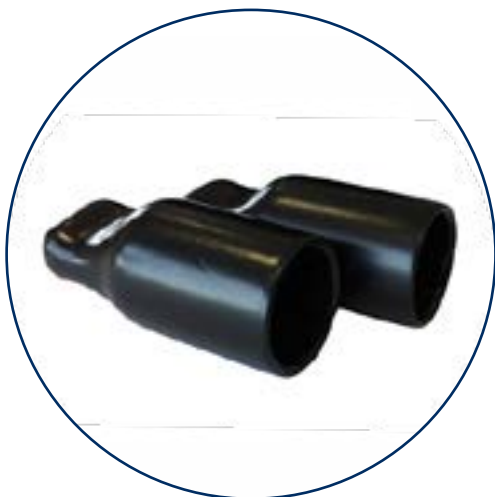
Duct OD (mm)	Cable/tube OD (mm)	Pack Qty
4	0.9	100
	1.25	100
	1.6	100
	2.1	100
5	0.9	100
	1.25	100
	1.6	100
	2.1	100
6	2.5	100
	0.9	100
	1.25	100
	1.6	100
7	2.1	100
	2.5	100
	0.9	100
	1.25	100
8	1.6	100
	2.1	100
	2.5	100
	0.9	100

Features

- Gas and Watertight up to 0.5 bar
- Suitable for retrofitting
- Easy installation
- No need to slide the seal over the glass fibre for installation
- Slim design
- Other versions available upon request suitable for retrofitting

*Datasheets available on request

FLEXIBLE END CAP



For Duct ø (mm)
4
5
6
7
8
10
12
14
16
18
20
25
32
40
43
50

Features

- Flexible, durable PVC cap
- Suitable as temporary seal for microtubes
- Various colours available
- Various sizes available ranging from 2mm to 100mm ID



HEAVY DUTY CUTTER

For Tube OD (mm)	Pack Qty
15-60mm	1

- Circular, longitudinal and spiral cutting
- Adjustable depth, high speed steel blade



CUTTER FOR OCCUPIED TUBE

- For cutting individual tubes (3-14mm) which are occupied by cable.



LONGITUDINAL SHEATH STRIPPER1 A

Description	Pack Qty
Longitudinal Cutter	1
Spare Blade	1

- 4 way cam for different thicknesses
- Shoe for small cables, reversible blade



SMALL TUBE CUTTER

For Tube OD (mm)	Pack Qty
4-14mm	1
Spare Blade	1



MEDIUM DUCT CUTTER

For Tube OD (mm)	Pack Qty
4-42mm	1



LARGE DUCT CUTTER

For Tube OD (mm)	Pack Qty
4-63mm	1



SHEATH STRIPPER

For Tube OD (mm)	Pack Qty
6-40mm	1
Spare Blade	1

- Circular and longitudinal cutting
- Adjustable depth, replaceable steel blade



CABLE DUCT CUTTER 4-70mm

For Tube OD (mm)	Pack Qty
4-70mm	1
Spare Blade	1

- Circular and longitudinal cutting
- Adjustable depth, replaceable steel blade



CABLE KNIFE

Description	Pack Qty
180mm Blade	1

- Strong, fixed blade and comfortable ergonomic handle
- Heat-Treated Carbon Steel Blade



BLOWING SPONGES

- Available in various sizes



BLOWING BALLS

- General purpose polyamide 66 resin
- Available in various sizes



ROUNDING TOOL (RED)

For Tube ID (mm)	Pack Qty
2.1mm	4
3.5mm	4
8mm	4



ROUNDING TOOL

For Tube iD (mm)	Pack Qty
10-26	1

- Used to round inner tube edges



MICRO JETTING LUBRICANT

- This micro-jetting lubricant is specifically designed to enhance the blowing performance of cables and micro-cables into ducts.



Access Chambers

“Delivering world class infrastructure systems for over 30 years”

To complement our FTTx Infrastructure range, Radius manufacture high quality pre-formed Access Chambers for use in utilities and civil engineering applications.

We offer two types of chambers: **Quadbox**®, a stackable ring system and **Radbox**®, a fully modular system built from panels and corner pieces. Our products are extremely flexible, suited to many markets/applications, and are sold worldwide.

Extremely robust, they provide the ideal alternative for concrete and brick-built chambers enabling fast, easy and cost effective installation.

TECHNICAL FEATURES

- Up to EN124 Class D400*
- Double wall construction using High Density Polyethylene (HDPE) based on structural foam moulding technology
- Stress free mouldings with excellent long-term performance and chemical resistance
- Free draining
- Immediate load-bearing strength
- Smooth outer wall with lip to lock into backfill
- Inert material, no toxic dust from cutting
- No need for concrete backfill

*Refer to our individual datasheets for more detail.

Applications

- Telecommunications
- Power & Energy
- Water
- Gas
- Highways
- Street Lighting / Traffic Signalling
- Rail

BENEFITS

- Simple stacking system, fast & reliable
- One stop fast installation
- Minimum disruption, reduced traffic management and install costs
- Robust & lightweight
- Excellent vertical & sidewall stiffness
- Generous overlap between sections for maximum integrity
- Suitable for use in congested networks
- Duct entry drill guides, highly adaptable
- Easy fit drop-in furniture



RADBOX®



Up to
40t



Radbox® is a high performance, pre-formed underground access chamber for all types of buried networks and utilities.

Radbox® is a modular system comprising of wall panels and corner pieces, which fit together to provide a wide range of chamber sizes.

The chamber is delivered as a compact lightweight flat-pack, consisting of easily assembled components. It can also be supplied pre-built, if requested.

Dimensions - Clear Openings

	2-Panel Combination					3-Panel Combination				
Single Panels (mm)	450	600	750	900	1050					
Extended Panels (mm)	825	975	1125	1200	1275	1350	1425	1500	1575	1650
	1725	1800	1875	1950	2025					

2- Panel Combination ●●● 3- Panel Combination - ●●●●

Modular height

Components are available in a choice of 500mm and 150mm height. Sections of either height can be stacked in any combination to achieve the desired depth.

QUADBOX®



Up to
40t

Quadbox® is a robust pre-formed underground access chamber system for use in all types of buried networks and utilities.

The Quadbox® system comprises of 150mm height stackable rings, which interlock to build variable depths. It is especially suitable for use in congested networks.

Note: More size combinations are available.

See our Access Chambers brochure for more details.

Available in 5 sizes:



300X300mm



600X450mm



725X255mm

BT 102



915X445mm

BT 104



1310X610mm

BT 106





1. DEFINITION

"the Company" shall mean Radius Plastics Limited;

"the Purchaser" shall mean the person(s), firm or company who purchases the Goods from the Company;

"Contract" shall mean any contract between the Company and the Purchaser for the sale and purchase of the Goods incorporating these Conditions;

"Contract Price" shall mean the total price for the Goods to be supplied under the Contract;

"Goods" shall mean any goods agreed in the Contract to be supplied to the Purchaser by the Company (including any part or parts of them).

2. APPLICATION OF TERMS

2.1 Subject to any variation under condition 2.3 the Contract will be on these Conditions to the exclusion of all other terms and conditions (including any terms or conditions which the Purchaser purports to apply under any purchase order, confirmation of order, specification or other document).

2.2 No terms or conditions endorsed upon, delivered with or contained in the Purchaser's purchase order, confirmation of order, specification or other document will form part of the Contract simply as a result of such document being referred to in the Contract.

2.3 These Conditions apply to all the Company's sales and any variation to these Conditions and any representations about the Goods shall have no effect unless expressly agreed in writing and signed by an authorised representative of the Company. Nothing in this Condition will exclude or limit the Company's liability for fraudulent misrepresentation.

2.4 Each order for Goods by the Purchaser from the Company shall be deemed to be an offer by the Purchaser to purchase Goods subject to these Conditions.

2.5 No order placed by the Purchaser shall be deemed to be accepted by the Company until a written acknowledgement of order is issued by the Company or (if earlier) the Company delivers the Goods to the Purchaser.

2.6 The Purchaser must ensure that the terms of its order and any applicable specification are complete and accurate.

Any quotation is given on the basis that no contract will come into existence until the Company despatches an acknowledgement of order to the Purchaser.

2.7 Any quotation is valid for a period of 30 days only from its date, provided that the Company has not previously withdrawn it.

3. DESCRIPTION OF GOODS

3.1 The description of the Goods shall be as set out in the Company's quotation.

3.2 All drawings, descriptive matter, specifications and advertising issued by the Company and any descriptions or illustrations contained in the Company's catalogues or brochures are issued or published for the sole purpose of giving an approximate idea of the Goods described in them. They will not form part of this Contract.

4. DELIVERY

4.1 Unless otherwise agreed in writing by the Company, delivery of the Goods shall take place at the Company's place of business.

4.2 The Purchaser will take delivery of the Goods within [14] days of the Company giving it notice that the Goods are ready for delivery.

4.3 Any dates specified by the Company for delivery of the Goods are intended to be an estimate and time for delivery shall not be made of the essence by notice. If no dates are specified, delivery will be within a reasonable time.

4.4 Subject to the other provisions of these Conditions the Company will not be liable for any direct, indirect or consequential loss (all three of which terms include, without limitation, loss of profits, loss of business, depletion of goodwill and like loss), costs, damages, charges or expenses caused directly or indirectly by any delay in the delivery of the Goods (even if caused by the Company's negligence), nor will any delay entitle the Purchaser to terminate or rescind the Contract unless such delay exceeds [180] days.

4.5 If for any reason the Purchaser will not accept delivery of any of the Goods when they are ready for delivery, or the Company is unable to deliver the Goods on time because the Purchaser has not provided appropriate instructions, documents, licences or authorisations:

4.5.1 risk in the Goods will pass to the Purchaser (including for loss or damage caused by the Company's negligence);

4.5.2 the Goods will be deemed to have been delivered; and

4.5.3 the Company may store the Goods until delivery whereupon the Purchaser will be liable for all related costs and expenses (including, without limitation, storage and insurance).

4.6 The Company shall be entitled to make deliveries by instalments. Each instalment shall be a separate agreement to which these Conditions will apply.

4.7 If the Company delivers to the Purchaser a quantity of Goods of up to [10]% more or less than the quantity accepted by the Company the Purchaser shall not be entitled to object to or reject the Goods or any of them by reason of the surplus or shortfall and shall pay for such goods at the pro rata Contract rate.

5. RISKS

5.1 The Goods are at the risk of the Purchaser from the time of delivery.

6. RESERVATION OF TITLE

6.1 Ownership of the Goods shall not pass to the Purchaser until the Company has received in full (in cash or cleared funds) all sums due to it in respect of:

6.1.1 the Goods; and

6.1.2 all other sums which are or which become due to the Company from the Purchaser on any account.

6.2 Until such time as property in the Goods passes from the Company the Purchaser shall upon request deliver up such of the Goods as have not ceased to be in existence or resold to the Company. If the Purchaser fails to do so the Company may enter upon any premises owned occupied or controlled by

the Purchaser where the Goods are situated and repossess the Goods.

6.3 Until ownership of the Goods has passed to the Purchaser, the Purchaser must:

6.3.1 hold the Goods on a fiduciary basis as the Company's bailee;

6.3.2 store the Goods (at no cost to the Company) separately from all other goods of the Buyer or any third party in such a way that they remain readily identifiable as the Company's property;

6.3.3 not destroy, deface or obscure any identifying mark or packaging on or relating to the Goods;

6.3.4 maintain the Goods in a satisfactory condition and keep them insured on the Company's behalf for their full price against all risks to the reasonable satisfaction of the Company.

On request the Purchaser shall produce the policy of insurance to the Company; and

6.3.5 hold the proceeds of the insurance referred to in condition 6.2.4 on trust for the Company and not mix them with any other money, nor pay the proceeds into an overdrawn back account.

6.4 The Purchaser may resell the Goods before ownership has passed to it solely on the following conditions:

6.4.1 any sale shall be effected in the ordinary course of the Purchaser's business at full market value; and

6.4.2 any such sale shall be a sale of the Company's property on the Purchaser's own behalf and the Purchaser shall deal as principal when making such a sale.

7. EVENTS OF DEFAULT

7.1 The Purchaser's right to possession of the Goods pending payment therefore shall terminate immediately if:

7.1.1 the Purchaser has a bankruptcy order made against him or makes an arrangement or composition with his creditors, or otherwise takes the benefit of any statutory provision for the time being in force for the relief of insolvent debt or (being a body corporate) convenes a meeting of creditors (whether formal or informal), or enters into liquidation whether voluntary or compulsory) except a solvent voluntary liquidation for the purpose only of reconstruction or amalgamation, or has a receiver and/or manager, administrator or administrative receiver appointed of its undertaking or any part thereof, or documents are filed with the court for the appointment of an administrator of the Purchaser or notice of intention to appoint an administrator is given by the Purchaser or its directors or by a qualifying floating charge holder, or a resolution is passed or a petition presented to any court for the winding up of the Purchaser or for the granting of an administration order in respect of the Purchaser or any proceedings are commenced relating to the insolvency or possible insolvency of the Purchaser; or

7.1.2 the Purchaser suffers or allows any execution, whether legal or equitable, to be levied on his/its property or obtained against him/it, or fails to observe/performance any of his/its obligations under these Conditions or any other contract between the Vendor and the Purchase or is unable to pay its debts within article 103 of the Insolvency (NI) Order 1989 or the Purchaser ceases to trade; or

7.1.3 the Purchaser encumbers or in any way charges any of the Goods.

8. PRICE

8.1 Unless otherwise agreed by the Company in writing the price for the Goods shall be the price in effect on the date of delivery or deemed delivery.

8.2 The price for the Goods shall be exclusive of any value added tax and all costs or charges in relation to loading, unloading, carriage and insurance all of which amounts the Purchaser will pay in addition when it is due to pay for the Goods.

9. PAYMENT

9.1 Payment of the price for the Goods is due on the last working day of the month following delivery.

9.2 Time for payment shall be of the essence.

9.3 If the Purchaser fails to pay the Company any sum due pursuant to the Contract the Purchaser will be liable to pay interest to the Company on such sum from the due date for payment at the annual rate of 1.5% above the base lending rate from time to time of [the Ulster Bank], accruing on a daily basis until payment is made, whether before or after any judgment.

9.4 All payments payable to the Company under the Contract shall become due immediately upon termination of this Contract despite any other provision.

9.5 The Purchaser shall make all payments due under the Contract without any deduction whether by way of set-off, counterclaim, discount, abatement or otherwise unless the Purchaser has a valid court order requiring an amount equal to such deduction to be paid by the Company to the Purchaser.

10. QUALITY

10.1 The Company warrants that (subject to the other provisions of these Conditions) upon delivery the Goods will:

10.1.1 be of satisfactory quality within the meaning of the Sale and Supply of Goods Act 1994; and

10.1.2 be reasonably fit for any particular purpose for which the Goods are being bought

if the Purchaser had made known that purpose to the Company in writing and the Company has confirmed in writing that the Goods are fit for the purpose as described by the Purchaser.

10.2 The Company shall not be liable for a breach of any of the warranties in condition 10.1 unless:

10.2.1 the Purchaser gives written notice of the defect to the Company and (if the defect is as a result of damage in transit) to the carrier, within 7 days of the date of delivery; and

10.2 The Company shall not be liable for a breach of any of the warranties in condition 10.1 unless:

10.2.1 the Purchaser gives written notice of the defect to the Company and (if the defect is as a result of damage in transit) to the carrier, within 7 days of the date of delivery; and



10.2.2 the Company is given a reasonable opportunity after receiving the notice of examining such Goods and the Purchaser (if asked to do so by the Company) returns such Goods to the Company's place of business at the Company's cost for the examination to take place there.

10.3 The Company shall not be liable for a breach of any of the warranties in condition 10.1 if:

10.3.1 the Purchaser makes any further use of such Goods after giving such notice; or

10.3.2 the defect arises because the Purchaser failed to follow the Company's oral or written instructions as to the storage, installation, commissioning, use or maintenance of the Goods or (if there are none) good trade practice; or

10.3.3 The Purchaser alters or repairs such Goods without the written consent of the Company.

10.4 Subject to conditions 10.2 and 10.3, if any of the Goods do not conform with any of the warranties in condition 10.1 the Company shall at its option repair or replace such Goods (or the defective part) or refund the price of such Goods at the pro rata Contract rate provided that, if the Company so requests, the Purchaser shall, at the Company's expense, return the Goods or the part of the such Goods which is defective to the Company

10.5 If the Company complies with condition 10.4 it shall have no further liability for a breach of any of the warranties in condition 10.1 in respect of such Goods

11. CLAIMS

11.1 All claims in respect of faulty goods must be submitted by the Purchaser in writing to the Company within seven days of delivery of the Goods.

11.2 All claims in respect of shortages in delivery must be notified by the Purchaser to the Company in writing within three days of delivery.

11.3 All claims in respect of non-delivery must be made in writing by the Purchaser to the Company within ten days of receipt by the Purchaser of an invoice or advice note (whichever is the earlier) in respect of those Goods.

12. ASSIGNMENT

12.1 The Purchaser shall not be entitled to assign this Contract or any part of it without the prior written consent of the Vendor.

12.2 The Company may assign this contract or any part of it to any person, firm or company.

13. LIMITATION OF LIABILITY

13.1 The following provisions set out the entire financial liability of the Company (including any liability for the acts or omissions of its employees, agents and sub-contractors) to the Purchaser in respect of:

13.1.1 any breach of these Conditions; and

13.1.2 any representation, statement or tortious act or omission including negligence arising under or in connection with this Contract.

13.2 All warranties, conditions and other terms implied by statute or common law (save for the conditions implied by section 12 of the Sale of Goods Act 1979) are, to the fullest extent permitted by law, excluded from this Contract.

13.3 Nothing in these Conditions excludes or limits the liability of the Company for death or personal injury caused by the Company's negligence or fraudulent misrepresentation.

13.4 Subject to conditions 14.2 and 14.3:

13.4.1 The Company's total liability in contract, tort (including negligence or breach of statutory duty), misrepresentation, restitution or otherwise, arising in connection with the performance or contemplated performance of this Contract shall be limited to the Contract Price; and

13.4.2 The Company shall not be liable to the Purchaser for any pure economic loss, loss of business, depletion of goodwill or otherwise, in each case whether direct, indirect or consequential, or any claims for consequential compensation whatsoever (howsoever caused) which arise out of or in connection with this Contract.

14. FORCE MAJEURE

14.1 The Company reserves the right to defer the date of delivery or to cancel the Contract or reduce the volume of the Goods ordered by the Purchaser (without liability to the Purchaser) if it is prevented from or delayed in the carrying on of its business due to circumstances beyond the reasonable control of the Company including, without limitation, acts of God, governmental actions, war or national emergency, acts of terrorism, protests, riot, civil commotion, fire, explosion, flood, epidemic, lock-outs, strikes or other labour disputes (whether or not relating to either party's workforce), or restraints or delays affecting carriers or inability or delay in obtaining supplies of adequate or suitable materials. Provided that, if the event in question continues for a continuous period in excess of 60 days, the Purchaser shall be entitled to give notice in writing to the Company to terminate the Contract.

15. GENERAL

15.1 Each right of remedy of the Company under the Contract is without prejudice to any other right or remedy of the Company whether under the Contract or not.

15.2 If any provision of the Contract is found by any court, tribunal or administrative body of competent jurisdiction to be wholly or partly illegal, invalid, void, voidable, unenforceable or unreasonable it shall to the extent of such illegality, invalidity, voidness, voidability, unenforceability or unreasonableness be deemed severable and the remaining provisions of the Contract and the remainder of such provision shall continue in full force and effect.

15.3 Failure or delay by the Company in enforcing or partially enforcing any provision of the Contract will not be construed as a waiver of any of its rights under the Contract.

15.4 Any waiver by the Company of any breach of, or any default under, any provision of the Contract by the Purchaser will not be deemed a waiver of any subsequent breach or default and will in no way affect the other terms of the Contract.

15.5 The parties to this Contract do not intend that any term of this Contract will be enforceable by virtue of the Contracts (Rights of Third Parties) Act 1999 by any person that is not a party to it.

16. JURISDICTION

16.1 The formation, existence, construction, performance, validity and all aspects of the Contract shall be governed by Northern Irish law and the parties submit to the exclusive jurisdiction of the Northern Ireland courts.

Have you got the complete set?

Download from www.radiustelecoms.com



Contact us to find out more:

Cable, Telecoms & Specials (CTS) Division

t: +44 (0)28 3844 6060

e: info@radiustelecoms.com

w: www.radiustelecoms.com



RADIUS
Systems

Contact us to find out more:

Cable, Telecoms & Specials (CTS) Division

t: +44 (0)28 3844 6060

e: info@radiustelecoms.com

w: www.radiustelecoms.com