

Outside Plant

Small Toby Box



Description

The Small Toby Box provides a sealed environment which can be connected to the existing network and is designed to accept a 54mm duct entry.

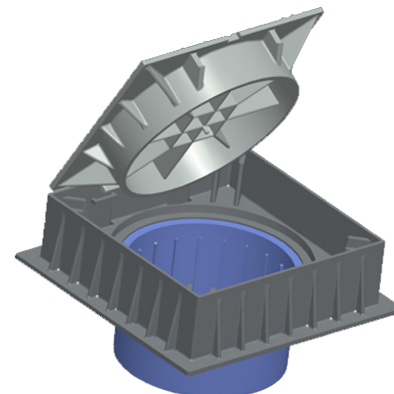
The 120 x120mm square surface box designed for use as a boundary box or it could also be used as a footway/curtilage plant marker solutions.

This is a robust unit having a clipped lid, which may be hinged back through 180° to prevent hinge breakage as found in some designs. The lid can be badged with CATV as standard or alternative designations are optional.

A metal detector plate may also be added.

Small Toby Box is manufactured from recycled polypropylene it will withstand hot rolled asphalt.

Test requirements as per EN124 or BS5834.



Drawing not to scale, for illustration purposes only



Technical

Dimensions	120x120x75mm (LxWxH) square top and 150x134mm base plate
Port sizes	54mm Duct
Badging	Optional