

# Motorway Communications

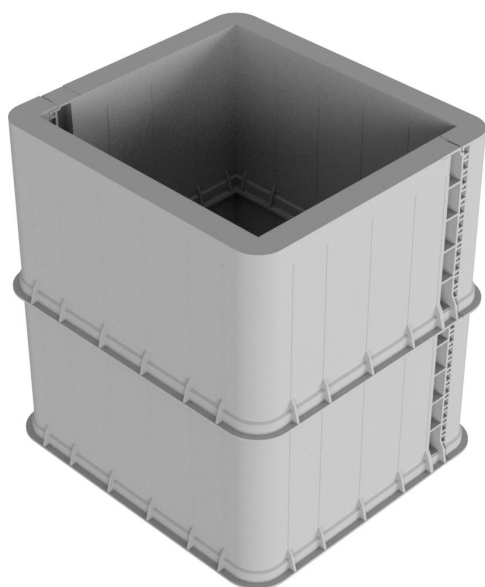
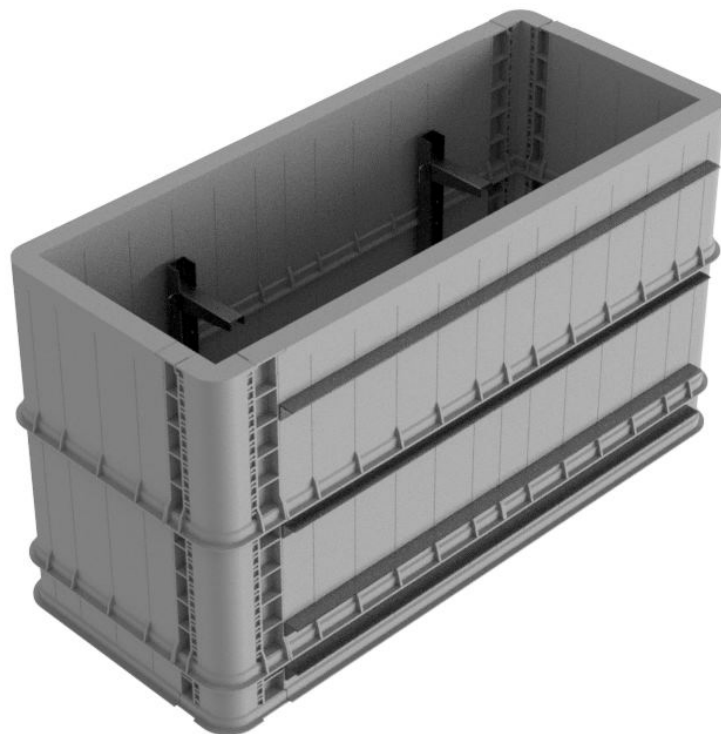
## Access Chambers & Main Duct Systems

### Chambers

#### Description

**Radbox® is a high performance, pre-formed underground access chamber for all types of buried networks and utilities.**

Radbox® is a modular system comprising of wall panels and corner pieces which fit together to provide a wide range of chamber sizes. Height can be adjusted using a combination of 500mm and 150mm height panels.



#### Features & Benefits

- EN124 Class D400\*
- Moulded from non-toxic High Density Polyethylene (HDPE) using structural foam moulding techniques
- Stress free mouldings with excellent long-term performance (25 years) and chemical resistance
- Immediate load-bearing strength
- No need for concrete backfill or raising frame\*
- Free Draining, not watertight
- Suitable for new or overbuild applications
- Can be supplied with “knockout” duct entries
- Pre-Assembled, pre-fitted furniture

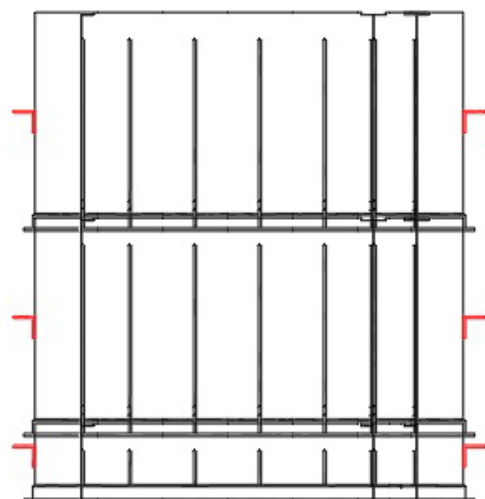
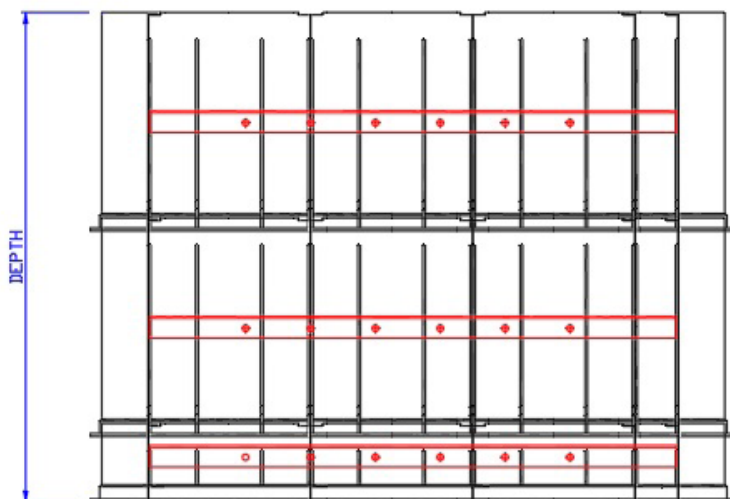
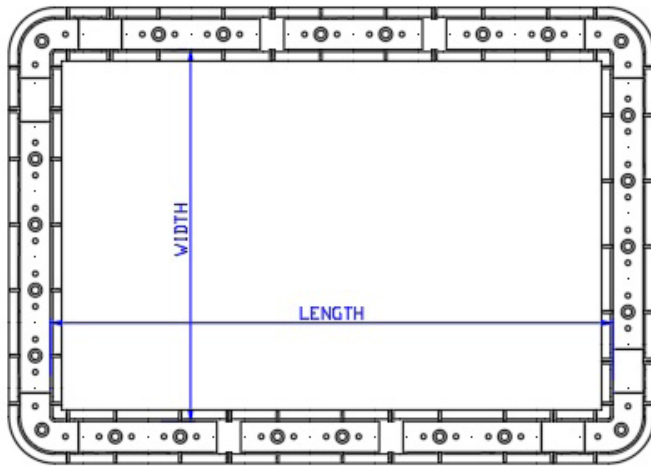
\*For carriageway installation use a concrete ring to isolate loads, please refer to our specific guidelines in the Radbox Installation document.

# Motorway Communications

## Access Chambers & Main Duct Systems

### Dimensions

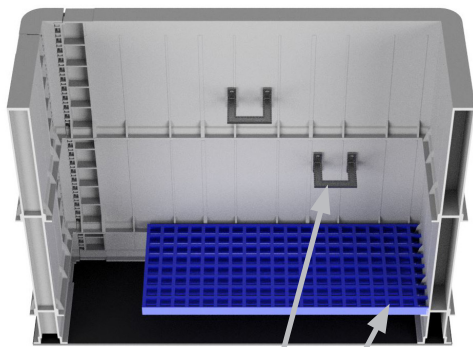
Highways Radbox Product	Type (A, B, C, D)	Length (mm)	Width (mm)	Depth (mm)	Fitted with floor (Y/N)	Supplied with steps (Y/N)	Supplied with cable bearer (Y/N)
NDX	A	1300	850	(970) 1120 1270	Y	Y	N
NDX	B	600	600	970	N	Y	N
NDX	C	1300	1000	(500) 650	Y	N	N
NDX	D	450	450	650	N	N	N
MCX0815	A	1300	850	1120	Y	Y	Y
MCX0815	B	750	675	970	N	Y	N
MCX0815	C	600	450	500	N	N	N



# Motorway Communications

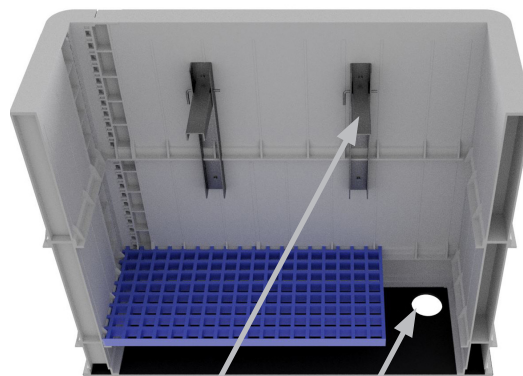
## Access Chambers & Main Duct Systems

### Chamber Accessories



Galvanised bolt on step iron

GRP mesh raised floor



Cable bearers

Full floor with sump hole

### Frames & Covers

#### Description

Designed and manufactured to meet the enhanced requirements of Highway England's HA 104/09 specification for non-trunk road or motorway use. The hinged range of access covers exceed BS EN 124 D400 requirements and include patented safety features. Including a sequential opening and unique locking system that fixes the cover in an upright position for a completely safe and simple operation.

- For use in a Group 4 D400 class environment
- Third party certified by BSI
- Safety keyway - ensures key's secure in keyway when lifting
- Hinged product for ease of access
- Captive hinges reduce risk of theft
- Cover support geometry reduces movement relative to the frame
- Four flanges - for placement away from kerb edges
- Locked
- Non rock - three-point suspension for non rock stability
- Safety-stop hinges
- Sequential opening
- Manufactured from strong and highly durable ductile iron
- Enlarged frame corners help to dissipate the load
- Mechanical lifting points
- Fully compliant with BS EN 124



# Motorway Communications

## Access Chambers & Main Duct Systems

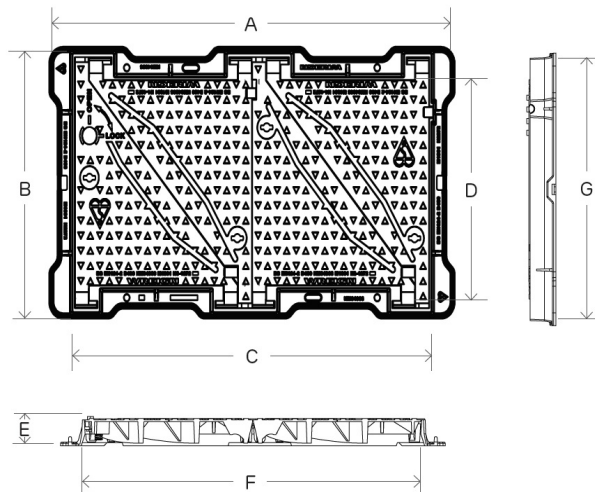


### Dimensions

Chamber Type	Clear opening size CxD (mm)	Base opening size FxG (mm)	Overall frame dimensions AxB (mm)	Frame Depth E (mm)
NDX B type	600 x 600	600 x 600	800 x 800	100
MCX0815 B type	750 x 675	775 x 700	950 x 875	100
NDX A type MCX0815 A type	1300 x 850	1325 x 875	1490 x 1050	100

### Available options

- Range of security locking arrangement
- Anti skid coating (60+ PSRV)
- Ventilation
- Badging
- Safety plates
- Safety grilles



## Ducts

### Twinwall

TwinWall is a high quality main duct system providing excellent cable protection and fast underground installation of telecommunications and utility networks.

TwinWall corrugated primary duct is extruded from high-density polyethylene (HDPE) in accordance with BS EN 61386-24:2010. Corrugated on the outside, smooth on the inside, TwinWall HDPE duct has a high static and dynamic load bearing capacity combined with high impact resistance. The smooth inner bore combined with the lower frictional coefficient of HDPE, reduces the effort required to install long lengths of sub-duct and cable.

A full range of fittings is also available incl. bends.

This twinwall product is supplied with a ring seal and a coupler.

- 450N compression resistance
- BSI Kitemark
- BBA approved



# Motorway Communications

## Access Chambers & Main Duct Systems



Material	HDPE
Colour	Purple
UV Stability	For 12 months external storage, for UK and Ireland only
Print	Every meter with meter count and batch number for traceability.
Standards	Ducts are manufactured in accordance with BS EN 61386-24 : 2010. RADIUS operates under ISO9001:2008 and ISO14001:2004 systems BBA, BSI Kitemark

Nominal O.D. (mm)	Nominal I.D. (mm)	Ovality (mm)	Crush (N)	Nominal Length (m)	Pack Qty. (Lengths)
110	94	1.0	450	6	100

Radius Twinwall Telecoms duct will be shipped on disposable wooden U-frames.

U-framed packages should be stored on even, stable ground. Maximum height: 3 frames.



### PVC

Radius uPVC duct is a compact solid wall pipe manufactured under the ISO9001:2008 quality system and in accordance with BS EN 61386-24 : 2010. Each length features a ring sealed socket, offering IP57 rated connection.

A full range of fittings is also available incl. bends and couplers

- Ring Seal Socket IP 57
- Chamfered Spigot Socket



Material	Unplasticised Polyvinyl Chloride (uPVC)				
Colour	Purple				
UV Stability	For 6 months external storage, for UK and Ireland only				
Print	Every meter with batch number for traceability. Motorway Communications				
Standards	Ducts are manufactured in accordance BS EN 61386-24 : 2010. RADIUS operates under ISO9001:2008 and ISO14001:2004 systems				

Nominal Pipe OD (mm)	Nominal ID (mm)	Compression Resistance (N)	Length (m)	Interference Ring Seal Socket Length (mm)	Pack Qty (lengths)
110	103	450	6	110	86

Radius uPVC Telecoms duct will be shipped on disposable wooden U-frames.

U-framed packages should be stored on even, stable ground. Maximum height: 3 frames.

# Motorway Communications

## Access Chambers & Main Duct Systems

### Accessories

#### Blank duct plug

Blank duct plugs effectively seal conduits to reduce the cost of cable placement and maintenance in new underground construction projects and routine work.

Each blank plug is equipped with a rope tie device to allow the securing of pull rope to the plug's back compression plate.

- Corrosion Proof
- Gas & Water Tight
- Debris & Animal Secure
- Removable & Reusable
- Easy installation and removal
- U.V., ozone and chemically resistant



Seal	Compression plates	Gaskets	Threaded Stem	Nut, Washer, Cap
Thermoplastic elastomer	Polypropylene	Neoprene	Nylon	PVC

#### Simplex and Multiplex subduct organisers

Simplex and multiplex duct plugs are to protect and organize ducts and cables for fiber optic, telecommunications and electrical applications.

- Corrosion Proof
- Rain-proof protection
- Prevents dirt, dust and animal intrusion
- Removable
- Easy installation and removal
- Long term use
- Eliminate duct-edge abrasion to cables



Seal	Compression plates	Washer, bolt and coupling	Bolt & coupling protector
Thermoplastic elastomer	PVC	Stainless steel	PVC

# Motorway Communications

## Access Chambers & Main Duct Systems



### Draw Rope

Durable draw cords can be supplied to fit ducts.  
Suitable for cable pulling.

- Coloured
- Rot-proof material
- Easy installation and removal
- 30 years lifetime
- over 5kN breaking load

